

Datasheet for ABIN5013121
anti-APBA2 antibody (AA 459-722)

3 Images

[Go to Product page](#)

Overview

Quantity:	100 µL
Target:	APBA2
Binding Specificity:	AA 459-722
Reactivity:	Human
Host:	Rabbit
Clonality:	Polyclonal
Conjugate:	This APBA2 antibody is un-conjugated
Application:	Western Blotting (WB), Immunohistochemistry (IHC), Immunocytochemistry (ICC)

Product Details

Immunogen:	APBA2 (Tyr459-Asn722)
Isotype:	IgG
Specificity:	The antibody is a rabbit polyclonal antibody raised against APBA2. It has been selected for its ability to recognize APBA2 in immunohistochemical staining and western blotting.
Purification:	Antigen-specific affinity chromatography

Target Details

Target:	APBA2
Alternative Name:	Amyloid Beta Precursor Protein Binding Protein A2 (APBA2) (APBA2 Products)
Background:	Alternative Names: APB-A2, LIN10, MINT2, X11L, X11-Like, Neuronal Munc18-1-interacting

Target Details

protein 2, Neuron-specific X11L protein, Adapter protein X11beta

Pathways: [Synaptic Vesicle Exocytosis](#)

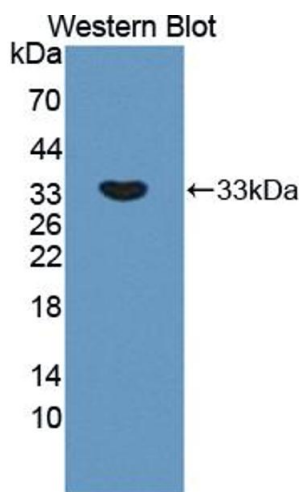
Application Details

Application Notes:	<ul style="list-style-type: none">Western blotting: 1:50-400 Immunocytochemistry in formalin fixed cells: 1:50-500 Immunohistochemistry in formalin fixed frozen section: 1:50-500 Immunohistochemistry in paraffin section: 1:10-100 Enzyme-linked Immunosorbent Assay: 1:100-1:5000 Optimal working dilutions must be determined by end user.
Comment:	The thermal stability is described by the loss rate. The loss rate was determined by accelerated thermal degradation test, that is, incubate the protein at 37°C for 48h, and no obvious degradation and precipitation were observed. The loss rate is less than 5% within the expiration date under appropriate storage condition.
Restrictions:	For Research Use only

Handling

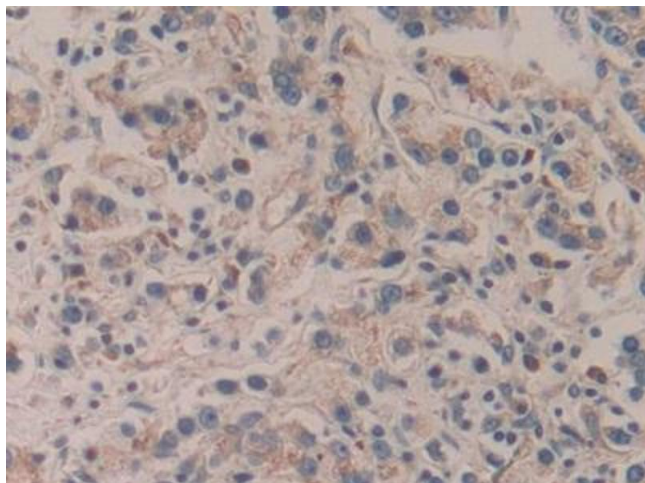
Format:	Liquid
Concentration:	Lot specific
Buffer:	PBS, pH 7.4, containing 0.02 % Sodium azide, 50 % glycerol.

Images



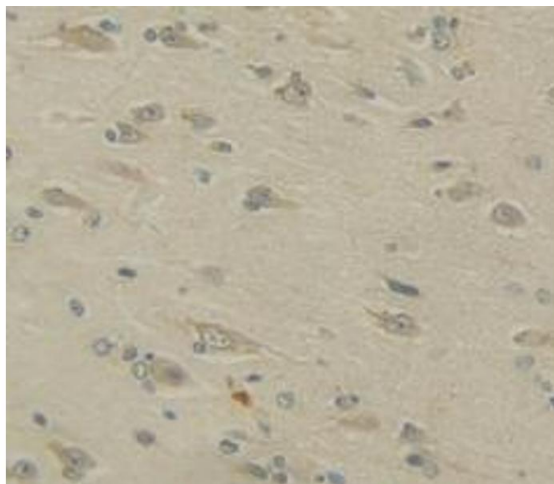
Western Blotting

Image 1. Figure. Western Blot; Sample: Recombinant protein.



Immunohistochemistry

Image 2. DAB staining on IHC-P; Samples: Human Prostate cancer Tissue



Immunohistochemistry

Image 3. Used in DAB staining on formalin fixed paraffin-embedded Kidney tissue