

Datasheet for ABIN5013122
anti-APBA3 antibody (AA 261-506)

2 Images

[Go to Product page](#)

Overview

Quantity:	100 µL
Target:	APBA3
Binding Specificity:	AA 261-506
Reactivity:	Mouse
Host:	Rabbit
Clonality:	Polyclonal
Conjugate:	This APBA3 antibody is un-conjugated
Application:	Western Blotting (WB), Immunohistochemistry (IHC), Immunocytochemistry (ICC)

Product Details

Immunogen:	APBA3 (Val261-Leu506)
Isotype:	IgG
Specificity:	The antibody is a rabbit polyclonal antibody raised against APBA3. It has been selected for its ability to recognize APBA3 in immunohistochemical staining and western blotting.
Purification:	Antigen-specific affinity chromatography

Target Details

Target:	APBA3
Alternative Name:	Amyloid Beta Precursor Protein Binding Protein A3 (APBA3) (APBA3 Products)
Background:	Alternative Names: X11L2, Mint3, APB-A3, Adapter protein X11gamma, Neuron-specific X11L2

Target Details

protein, Neuronal Munc18-1-interacting protein 3

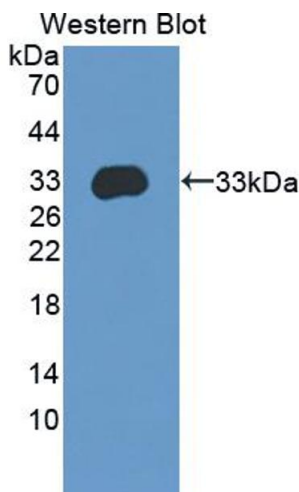
Application Details

Application Notes:	<ul style="list-style-type: none">Western blotting: 1:50-400 Immunocytochemistry in formalin fixed cells: 1:50-500 Immunohistochemistry in formalin fixed frozen section: 1:50-500 Immunohistochemistry in paraffin section: 1:10-100 Enzyme-linked Immunosorbent Assay: 1:100-1:5000 Optimal working dilutions must be determined by end user.
Comment:	The thermal stability is described by the loss rate. The loss rate was determined by accelerated thermal degradation test, that is, incubate the protein at 37°C for 48h, and no obvious degradation and precipitation were observed. The loss rate is less than 5% within the expiration date under appropriate storage condition.
Restrictions:	For Research Use only

Handling

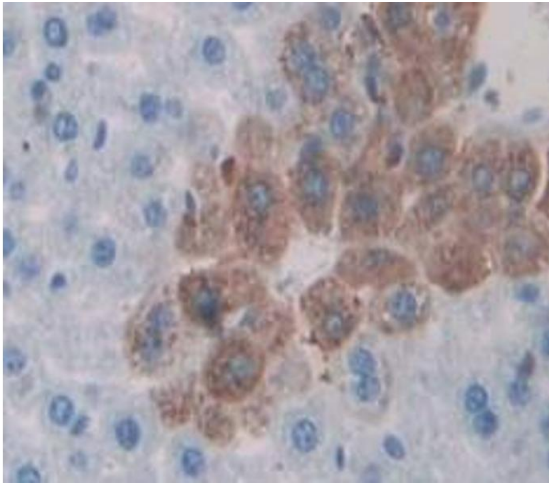
Format:	Liquid
Concentration:	Lot specific
Buffer:	PBS, pH 7.4, containing 0.02 % Sodium azide, 50 % glycerol.

Images



Western Blotting

Image 1. Figure. Western Blot; Sample: Recombinant protein.



Immunohistochemistry

Image 2. Used in DAB staining on formalin fixed paraffin-embedded Kidney tissue