



[Go to Product page](#)

Datasheet for ABIN5013133

anti-Band 3/AE1 antibody (AA 558-675)

2 Images

Overview

Quantity:	100 µL
Target:	Band 3/AE1 (SLC4A1)
Binding Specificity:	AA 558-675
Reactivity:	Rat
Host:	Rabbit
Clonality:	Polyclonal
Conjugate:	This Band 3/AE1 antibody is un-conjugated
Application:	Western Blotting (WB), Immunohistochemistry (IHC), Immunocytochemistry (ICC)

Product Details

Immunogen:	AE1 (Ile558-Phe675)
Isotype:	IgG
Specificity:	The antibody is a rabbit polyclonal antibody raised against AE1. It has been selected for its ability to recognize AE1 in immunohistochemical staining and western blotting.
Purification:	Antigen-specific affinity chromatography

Target Details

Target:	Band 3/AE1 (SLC4A1)
Alternative Name:	Anion Exchange Protein 1 (AE1) (SLC4A1 Products)
Background:	Alternative Names: CD233, SLC4A1, SLC4-A1, WD, BND3, DI, EMPB3, EPB3, FR, RTA1A, SW,

Target Details

WD1, WR, Solute Carrier Family 4, Anion Exchanger, Member 1, Erythrocyte Membrane Protein
Band 3

Application Details

Application Notes:

- Western blotting: 1:50-400 Immunocytochemistry in formalin fixed cells: 1:50-500 Immunohistochemistry in formalin fixed frozen section: 1:50-500 Immunohistochemistry in paraffin section: 1:10-100 Enzyme-linked Immunosorbent Assay: 1:100-1:5000 Optimal working dilutions must be determined by end user.

Comment: The thermal stability is described by the loss rate. The loss rate was determined by accelerated thermal degradation test, that is, incubate the protein at 37°C for 48h, and no obvious degradation and precipitation were observed. The loss rate is less than 5% within the expiration date under appropriate storage condition.

Restrictions: For Research Use only

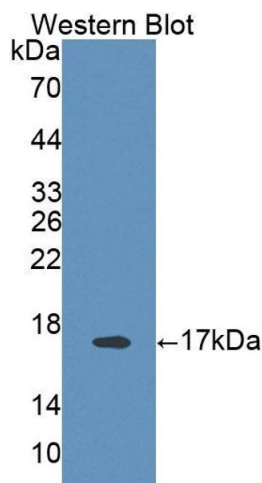
Handling

Format: Liquid

Concentration: Lot specific

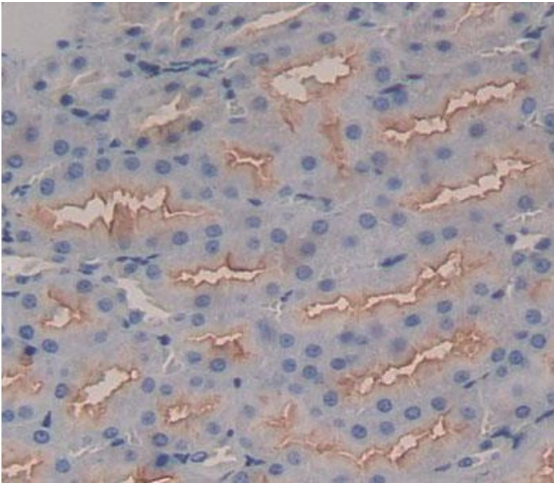
Buffer: PBS, pH 7.4, containing 0.02 % Sodium azide, 50 % glycerol.

Images



Western Blotting

Image 1. Figure. Western Blot; Sample: Recombinant protein.



Immunohistochemistry

Image 2. Used in DAB staining on formalin fixed paraffin-embedded Kidney tissue