

Datasheet for ABIN5013137
anti-TAP2 antibody (AA 467-703)

3 Images

[Go to Product page](#)

Overview

Quantity:	100 µL
Target:	TAP2
Binding Specificity:	AA 467-703
Reactivity:	Rat
Host:	Rabbit
Clonality:	Polyclonal
Conjugate:	This TAP2 antibody is un-conjugated
Application:	Western Blotting (WB), Immunohistochemistry (IHC), Immunocytochemistry (ICC)

Product Details

Immunogen:	TAP2 (Arg467-Ala703)
Isotype:	IgG
Specificity:	The antibody is a rabbit polyclonal antibody raised against TAP2. It has been selected for its ability to recognize TAP2 in immunohistochemical staining and western blotting.
Purification:	Antigen-specific affinity chromatography

Target Details

Target:	TAP2
Alternative Name:	Antigen Peptide Transporter 2 (TAP2) (TAP2 Products)
Background:	Alternative Names: ABC18, ABCB3, APT2, PSF2, RING11, Y1, ATP-binding cassette sub-family B

Target Details

member 3, Peptide supply factor 2, Peptide transporter involved in antigen processing 2

Pathways: [Regulation of Leukocyte Mediated Immunity](#), [Positive Regulation of Immune Effector Process](#), [Human Leukocyte Antigen \(HLA\) in Adaptive Immune Response](#)

Application Details

Application Notes:

- Western blotting: 1:50-400 Immunocytochemistry in formalin fixed cells: 1:50-500 Immunohistochemistry in formalin fixed frozen section: 1:50-500 Immunohistochemistry in paraffin section: 1:10-100 Enzyme-linked Immunosorbent Assay: 1:100-1:5000 Optimal working dilutions must be determined by end user.

Comment: The thermal stability is described by the loss rate. The loss rate was determined by accelerated thermal degradation test, that is, incubate the protein at 37°C for 48h, and no obvious degradation and precipitation were observed. The loss rate is less than 5% within the expiration date under appropriate storage condition.

Restrictions: For Research Use only

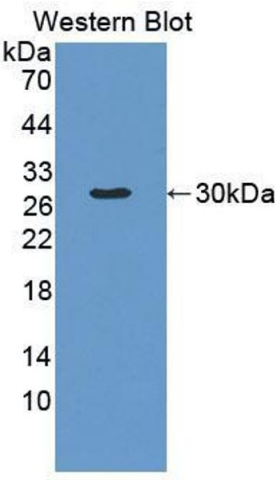
Handling

Format: Liquid

Concentration: Lot specific

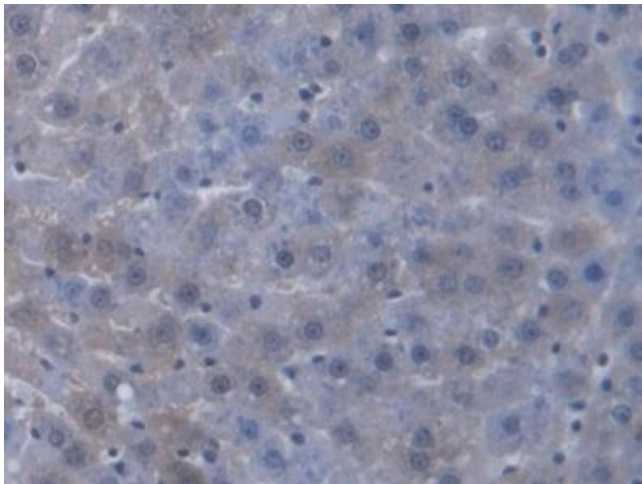
Buffer: PBS, pH 7.4, containing 0.02 % Sodium azide, 50 % glycerol.

Images



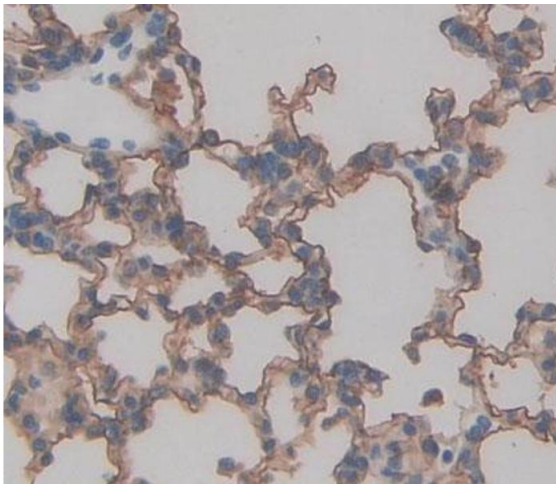
Western Blotting

Image 1. Figure. Western Blot; Sample: Recombinant protein.



Immunohistochemistry

Image 2. DAB staining on IHC-P; Samples: Rat Liver Tissue



Immunohistochemistry

Image 3. Used in DAB staining on formalin fixed paraffin-embedded lung tissue