

Datasheet for ABIN5013150

**anti-Apolipoprotein M antibody (AA 23-188)**[Go to Product page](#)**2** Images

## Overview

Quantity:	100 µL
Target:	Apolipoprotein M (APOM)
Binding Specificity:	AA 23-188
Reactivity:	Dog
Host:	Rabbit
Clonality:	Polyclonal
Conjugate:	This Apolipoprotein M antibody is un-conjugated
Application:	Western Blotting (WB), Immunohistochemistry (IHC), Immunocytochemistry (ICC)

## Product Details

Immunogen:	APOM (Cys23-Asn188)
Isotype:	IgG
Specificity:	The antibody is a rabbit polyclonal antibody raised against APOM. It has been selected for its ability to recognize APOM in immunohistochemical staining and western blotting.
Purification:	Antigen-specific affinity chromatography

## Target Details

Target:	Apolipoprotein M (APOM)
Abstract:	<a href="#">APOM Products</a>
Background:	Alternative Names: Apo-M, G3a, NG20, Protein G3a

Application Details

Application Notes:	<ul style="list-style-type: none"><li>Western blotting: 1:50-400 Immunocytochemistry in formalin fixed cells: 1:50-500 Immunohistochemistry in formalin fixed frozen section: 1:50-500 Immunohistochemistry in paraffin section: 1:10-100 Enzyme-linked Immunosorbent Assay: 1:100-1:5000 Optimal working dilutions must be determined by end user.</li></ul>
Comment:	The thermal stability is described by the loss rate. The loss rate was determined by accelerated thermal degradation test, that is, incubate the protein at 37&degC for 48h, and no obvious degradation and precipitation were observed. The loss rate is less than 5% within the expiration date under appropriate storage condition.
Restrictions:	For Research Use only

Handling

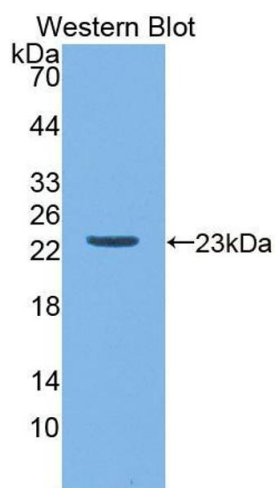
Format:	Liquid
Concentration:	Lot specific
Buffer:	PBS, pH 7.4, containing 0.02 % Sodium azide, 50 % glycerol.

Images



**Western Blotting**

**Image 1.** Western Blot; Sample: Canine Serum; Primary Ab: 2µg/ml Rabbit Anti-Canine APOM Antibody Second Ab: 0.2µg/mL HRP-Linked Caprine Anti-Rabbit IgG Polyclonal Antibody (Catalog: SAA544Rb19)



Western Blotting

**Image 2.** Figure. Western Blot; Sample: Recombinant protein.