



Datasheet for ABIN5013186
anti-ABCB7 antibody (AA 472-752)



[Go to Product page](#)

2 Images

Overview

Quantity:	100 µL
Target:	ABCB7
Binding Specificity:	AA 472-752
Reactivity:	Human
Host:	Rabbit
Clonality:	Polyclonal
Conjugate:	This ABCB7 antibody is un-conjugated
Application:	Western Blotting (WB), Immunohistochemistry (IHC), Immunocytochemistry (ICC)

Product Details

Immunogen:	ABCB7 (Val472-Cys752)
Isotype:	IgG
Specificity:	The antibody is a rabbit polyclonal antibody raised against ABCB7. It has been selected for its ability to recognize ABCB7 in immunohistochemical staining and western blotting.
Purification:	Antigen-specific affinity chromatography

Target Details

Target:	ABCB7
Alternative Name:	ATP Binding Cassette Transporter B7 (ABCB7) (ABCB7 Products)
Background:	Alternative Names: ABC-B7, ABC7, ASAT, Atm1p, ATP-binding cassette sub-family B member 7,

Target Details

mitochondrial

Pathways: [Transition Metal Ion Homeostasis](#)

Application Details

Application Notes:

- Western blotting: 1:50-400 Immunocytochemistry in formalin fixed cells: 1:50-500 Immunohistochemistry in formalin fixed frozen section: 1:50-500 Immunohistochemistry in paraffin section: 1:10-100 Enzyme-linked Immunosorbent Assay: 1:100-1:5000 Optimal working dilutions must be determined by end user.

Comment: The thermal stability is described by the loss rate. The loss rate was determined by accelerated thermal degradation test, that is, incubate the protein at 37°C for 48h, and no obvious degradation and precipitation were observed. The loss rate is less than 5% within the expiration date under appropriate storage condition.

Restrictions: For Research Use only

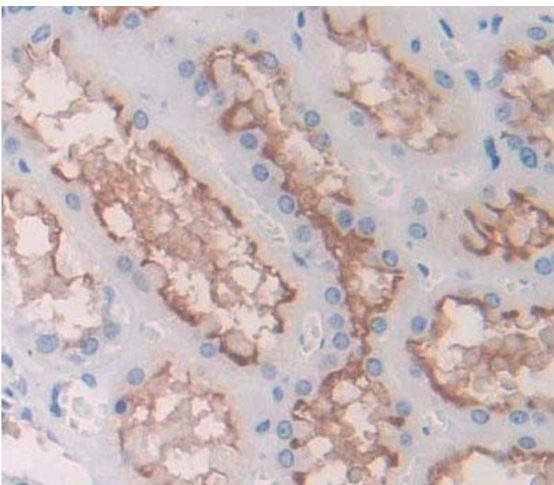
Handling

Format: Liquid

Concentration: Lot specific

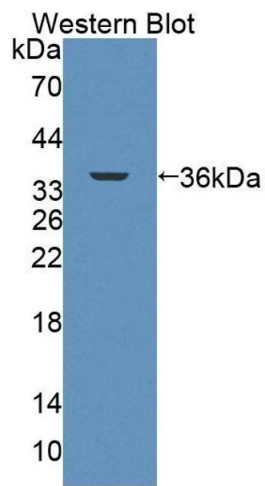
Buffer: PBS, pH 7.4, containing 0.02 % Sodium azide, 50 % glycerol.

Images



Immunohistochemistry

Image 1. Used in DAB staining on formalin fixed paraffin-embedded kidney tissue



Western Blotting

Image 2. Figure. Western Blot; Sample: Recombinant protein.