

Datasheet for ABIN5013189
anti-ABCB8 antibody (AA 472-735)

3 Images

[Go to Product page](#)

Overview

Quantity:	100 µL
Target:	ABCB8
Binding Specificity:	AA 472-735
Reactivity:	Human
Host:	Rabbit
Clonality:	Polyclonal
Conjugate:	This ABCB8 antibody is un-conjugated
Application:	Western Blotting (WB), Immunohistochemistry (IHC), Immunocytochemistry (ICC)

Product Details

Immunogen:	ABCB8 (Val472-Ser735)
Isotype:	IgG
Specificity:	The antibody is a rabbit polyclonal antibody raised against ABCB8. It has been selected for its ability to recognize ABCB8 in immunohistochemical staining and western blotting.
Purification:	Antigen-specific affinity chromatography

Target Details

Target:	ABCB8
Alternative Name:	ATP Binding Cassette Transporter B8 (ABCB8) (ABCB8 Products)
Background:	Alternative Names: ABC-B8, M-ABC1, MABC1, Mitochondrial ABC Protein, Mitochondrial ATP-

Target Details

binding cassette 1, ATP-binding cassette sub-family B member 8, mitochondrial

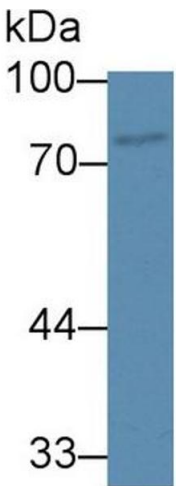
Application Details

Application Notes:	<ul style="list-style-type: none">Western blotting: 1:50-400 Immunocytochemistry in formalin fixed cells: 1:50-500 Immunohistochemistry in formalin fixed frozen section: 1:50-500 Immunohistochemistry in paraffin section: 1:10-100 Enzyme-linked Immunosorbent Assay: 1:100-1:5000 Optimal working dilutions must be determined by end user.
Comment:	The thermal stability is described by the loss rate. The loss rate was determined by accelerated thermal degradation test, that is, incubate the protein at 37°C for 48h, and no obvious degradation and precipitation were observed. The loss rate is less than 5% within the expiration date under appropriate storage condition.
Restrictions:	For Research Use only

Handling

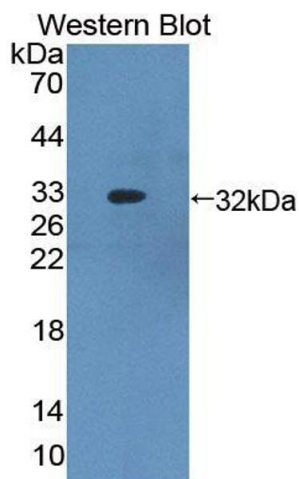
Format:	Liquid
Concentration:	Lot specific
Buffer:	PBS, pH 7.4, containing 0.02 % Sodium azide, 50 % glycerol.

Images



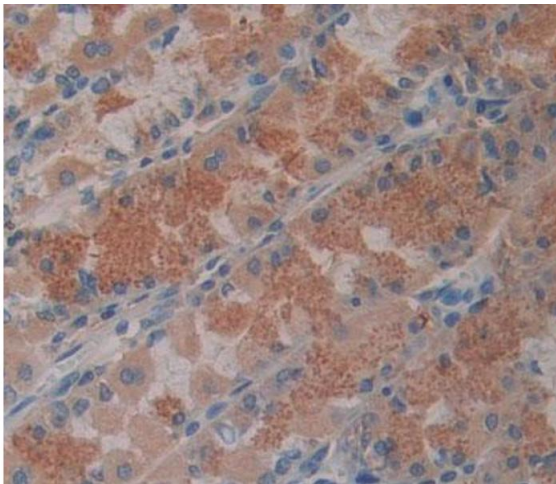
Western Blotting

Image 1. Western Blot; Sample: Human Jurkat cell lysate; Primary Ab: 1µg/ml Rabbit Anti-Human ABCB8 Antibody Second Ab: 0.2µg/mL HRP-Linked Caprine Anti-Rabbit IgG Polyclonal Antibody (Catalog: SAA544Rb19)



Western Blotting

Image 2. Figure. Western Blot; Sample: Recombinant protein.



Immunohistochemistry

Image 3. Used in DAB staining on formalin fixed paraffin-embedded stomach tissue