

Datasheet for ABIN5013199
anti-ABCF1 antibody (AA 617-837)

3 Images

[Go to Product page](#)

Overview

Quantity:	100 µL
Target:	ABCF1
Binding Specificity:	AA 617-837
Reactivity:	Mouse
Host:	Rabbit
Clonality:	Polyclonal
Conjugate:	This ABCF1 antibody is un-conjugated
Application:	Western Blotting (WB), Immunohistochemistry (IHC), Immunocytochemistry (ICC)

Product Details

Immunogen:	ABCF1 (Leu617-Asp837)
Isotype:	IgG
Specificity:	The antibody is a rabbit polyclonal antibody raised against ABCF1. It has been selected for its ability to recognize ABCF1 in immunohistochemical staining and western blotting.
Purification:	Antigen-specific affinity chromatography

Target Details

Target:	ABCF1
Alternative Name:	ATP Binding Cassette Transporter F1 (ABCF1) (ABCF1 Products)
Background:	Alternative Names: ABC-F1, ABC27, ABC50, ATP-binding cassette 50, TNF-alpha-stimulated

Target Details

ABC protein

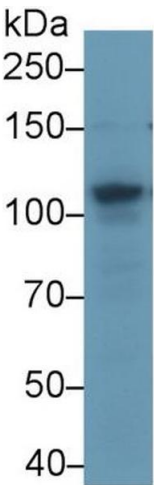
Application Details

Application Notes:	<ul style="list-style-type: none">Western blotting: 1:50-400 Immunocytochemistry in formalin fixed cells: 1:50-500 Immunohistochemistry in formalin fixed frozen section: 1:50-500 Immunohistochemistry in paraffin section: 1:10-100 Enzyme-linked Immunosorbent Assay: 1:100-1:5000 Optimal working dilutions must be determined by end user.
Comment:	The thermal stability is described by the loss rate. The loss rate was determined by accelerated thermal degradation test, that is, incubate the protein at 37°C for 48h, and no obvious degradation and precipitation were observed. The loss rate is less than 5% within the expiration date under appropriate storage condition.
Restrictions:	For Research Use only

Handling

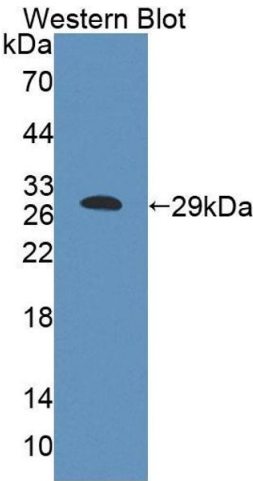
Format:	Liquid
Concentration:	Lot specific
Buffer:	PBS, pH 7.4, containing 0.02 % Sodium azide, 50 % glycerol.

Images



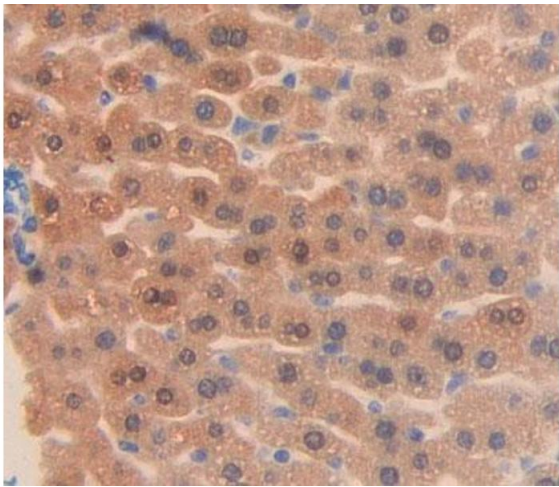
Western Blotting

Image 1. Western Blot; Sample: Human k562 cell lysate; ;Primary Ab: 2µg/ml Rabbit Anti-Mouse ABCF1 Antibody;Second Ab: 0.2µg/mL HRP-Linked Caprine Anti-Rabbit IgG Polyclonal Antibody;(Catalog: SAA544Rb19)



Western Blotting

Image 2. Figure. Western Blot; Sample: Recombinant protein.



Immunohistochemistry

Image 3. Used in DAB staining on formalin fixed paraffin-embedded liver tissue