

Datasheet for ABIN5013223  
**anti-BCL10 antibody (AA 1-233)**



[Go to Product page](#)

2 Images

## Overview

Quantity:	100 µL
Target:	BCL10
Binding Specificity:	AA 1-233
Reactivity:	Human
Host:	Rabbit
Clonality:	Polyclonal
Conjugate:	This BCL10 antibody is un-conjugated
Application:	Western Blotting (WB), Immunohistochemistry (IHC), Immunocytochemistry (ICC)

## Product Details

Immunogen:	Bcl10 (Met1-Gln233)
Isotype:	IgG
Specificity:	The antibody is a rabbit polyclonal antibody raised against Bcl10. It has been selected for its ability to recognize Bcl10 in immunohistochemical staining and western blotting.
Purification:	Antigen-specific affinity chromatography

## Target Details

Target:	BCL10
Abstract:	<a href="#">BCL10 Products</a>
Background:	Alternative Names: CARMEN, CIPER, CLAP, c-E10, mE10, CARD-containing molecule enhancing

## Target Details

NF-kappa-B, CED-3/ICH-1 prodomain homologous E10-like regulator, Cellular homolog of vCARMEN

### Pathways:

[TCR Signaling](#), [Fc-epsilon Receptor Signaling Pathway](#), [Activation of Innate immune Response](#), [Positive Regulation of Immune Effector Process](#), [Production of Molecular Mediator of Immune Response](#), [Tube Formation](#), [Positive Regulation of Endopeptidase Activity](#), [BCR Signaling](#), [Ubiquitin Proteasome Pathway](#), [S100 Proteins](#)

## Application Details

### Application Notes:

- Western blotting: 1:50-400 Immunocytochemistry in formalin fixed cells: 1:50-500 Immunohistochemistry in formalin fixed frozen section: 1:50-500 Immunohistochemistry in paraffin section: 1:10-100 Enzyme-linked Immunosorbent Assay: 1:100-1:5000 Optimal working dilutions must be determined by end user.

### Comment:

The thermal stability is described by the loss rate. The loss rate was determined by accelerated thermal degradation test, that is, incubate the protein at 37&degC for 48h, and no obvious degradation and precipitation were observed. The loss rate is less than 5% within the expiration date under appropriate storage condition.

### Restrictions:

For Research Use only

## Handling

### Format:

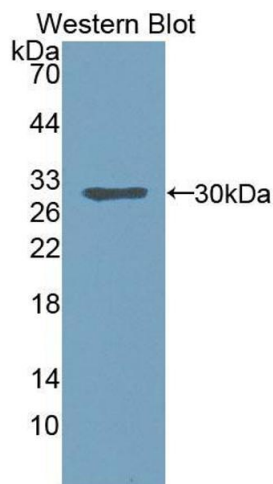
Liquid

### Concentration:

Lot specific

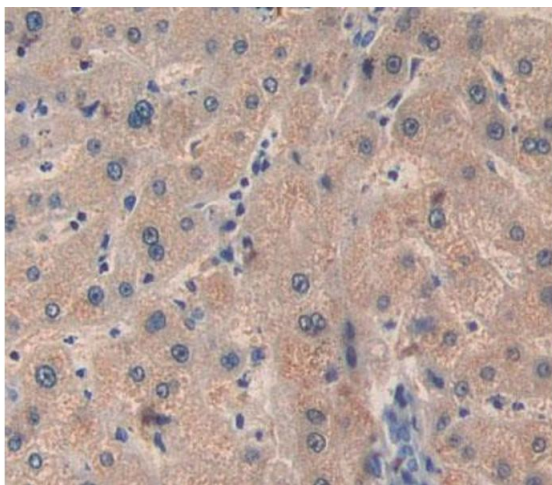
### Buffer:

PBS, pH 7.4, containing 0.02 % Sodium azide, 50 % glycerol.



### Western Blotting

**Image 1.** Figure. Western Blot; Sample: Recombinant protein.



### Immunohistochemistry

**Image 2.** Used in DAB staining on formalin fixed paraffin-embedded Kidney tissue