

Datasheet for ABIN5013236  
**anti-BPGM antibody (AA 85-216)**

## 3 Images

[Go to Product page](#)

## Overview

Quantity:	100 µL
Target:	BPGM
Binding Specificity:	AA 85-216
Reactivity:	Mouse
Host:	Rabbit
Clonality:	Polyclonal
Conjugate:	This BPGM antibody is un-conjugated
Application:	Western Blotting (WB), Immunohistochemistry (IHC), Immunocytochemistry (ICC)

## Product Details

Immunogen:	BPGM (Trp85-Val216)
Isotype:	IgG
Specificity:	The antibody is a rabbit polyclonal antibody raised against BPGM. It has been selected for its ability to recognize BPGM in immunohistochemical staining and western blotting.
Purification:	Antigen-specific affinity chromatography

## Target Details

Target:	BPGM
Alternative Name:	Bisphosphoglycerate Mutase (BPGM) ( <a href="#">BPGM Products</a> )
Background:	Alternative Names: 2,3-Bisphosphoglycerate Mutase, 2,3-bisphosphoglycerate mutase,

## Target Details

erythrocyte, 2,3-bisphosphoglycerate synthase, BPG-dependent PGAM

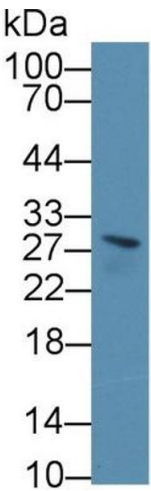
## Application Details

Application Notes:	<ul style="list-style-type: none"><li>Western blotting: 1:50-400 Immunocytochemistry in formalin fixed cells: 1:50-500 Immunohistochemistry in formalin fixed frozen section: 1:50-500 Immunohistochemistry in paraffin section: 1:10-100 Enzyme-linked Immunosorbent Assay: 1:100-1:5000 Optimal working dilutions must be determined by end user.</li></ul>
Comment:	The thermal stability is described by the loss rate. The loss rate was determined by accelerated thermal degradation test, that is, incubate the protein at 37&degC for 48h, and no obvious degradation and precipitation were observed. The loss rate is less than 5% within the expiration date under appropriate storage condition.
Restrictions:	For Research Use only

## Handling

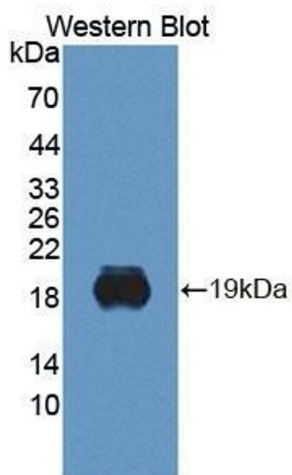
Format:	Liquid
Concentration:	Lot specific
Buffer:	PBS, pH 7.4, containing 0.02 % Sodium azide, 50 % glycerol.

## Images



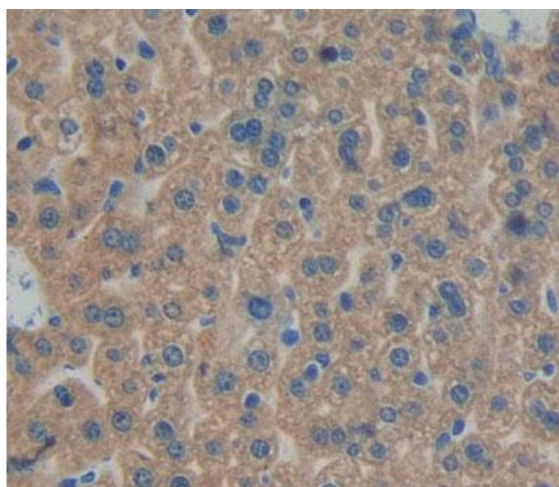
### Western Blotting

**Image 1.** Western Blot; Sample: Mouse Serum; Primary Ab: 1µg/ml Rabbit Anti-Mouse BPGM Antibody Second Ab: 0.2µg/mL HRP-Linked Caprine Anti-Rabbit IgG Polyclonal Antibody (Catalog: SAA544Rb19)



#### Western Blotting

**Image 2.** Figure. Western Blot; Sample: Recombinant protein.



#### Immunohistochemistry

**Image 3.** Used in DAB staining on formalin fixed paraffin-embedded liver tissue