



[Go to Product page](#)

Datasheet for ABIN5013263  
**anti-CELSR2 antibody (AA 2589-2849)**

2 Images

### Overview

Quantity:	100 µL
Target:	CELSR2
Binding Specificity:	AA 2589-2849
Reactivity:	Mouse
Host:	Rabbit
Clonality:	Polyclonal
Conjugate:	This CELSR2 antibody is un-conjugated
Application:	Immunohistochemistry (IHC), Western Blotting (WB), Immunocytochemistry (ICC)

### Product Details

Immunogen:	CELSR2 (Leu2589-Ser2849)
Isotype:	IgG
Specificity:	The antibody is a rabbit polyclonal antibody raised against CELSR2. It has been selected for its ability to recognize CELSR2 in immunohistochemical staining and western blotting.
Purification:	Antigen-specific affinity chromatography

### Target Details

Target:	CELSR2
Abstract:	<a href="#">CELSR2 Products</a>
Background:	Alternative Names: CDHF10, EGFL2, Flamingo 1, MEGF3, Cadherin family member 10,

## Target Details

Epidermal growth factor-like protein 2, Multiple epidermal growth factor-like domains protein 3

## Application Details

Application Notes: 

- Western blotting: 1:50-400 Immunocytochemistry in formalin fixed cells: 1:50-500 Immunohistochemistry in formalin fixed frozen section: 1:50-500 Immunohistochemistry in paraffin section: 1:10-100 Enzyme-linked Immunosorbent Assay: 1:100-1:5000 Optimal working dilutions must be determined by end user.

Comment: The thermal stability is described by the loss rate. The loss rate was determined by accelerated thermal degradation test, that is, incubate the protein at 37°C for 48h, and no obvious degradation and precipitation were observed. The loss rate is less than 5% within the expiration date under appropriate storage condition.

Restrictions: For Research Use only

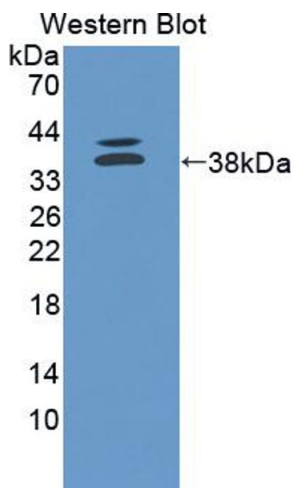
## Handling

Format: Liquid

Concentration: Lot specific

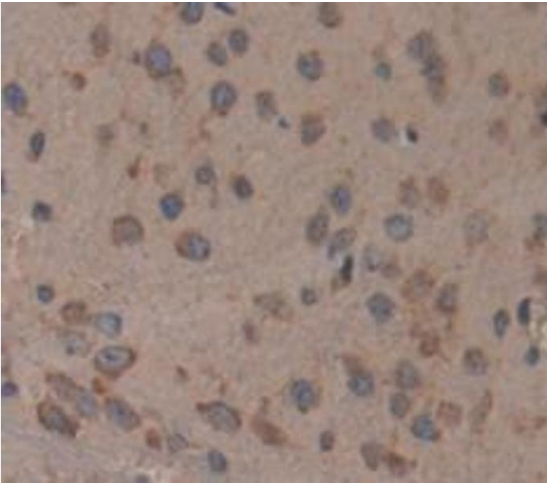
Buffer: PBS, pH 7.4, containing 0.02 % Sodium azide, 50 % glycerol.

## Images



### Western Blotting

**Image 1.** Figure. Western Blot; Sample: Recombinant protein.



### Immunohistochemistry

**Image 2.** Used in DAB staining on formalin fixed paraffin-embedded Kidney tissue