

Datasheet for ABIN5013269  
**anti-CABIN1 antibody (AA 23-288)**[Go to Product page](#)

## 2 Images

## Overview

Quantity:	100 µL
Target:	CABIN1
Binding Specificity:	AA 23-288
Reactivity:	Human
Host:	Rabbit
Clonality:	Polyclonal
Conjugate:	This CABIN1 antibody is un-conjugated
Application:	Western Blotting (WB), Immunohistochemistry (IHC), Immunocytochemistry (ICC)

## Product Details

Immunogen:	CABIN1 (Ser23-Glu288)
Isotype:	IgG
Specificity:	The antibody is a rabbit polyclonal antibody raised against CABIN1. It has been selected for its ability to recognize CABIN1 in immunohistochemical staining and western blotting.
Purification:	Antigen-specific affinity chromatography

## Target Details

Target:	CABIN1
Abstract:	<a href="#">CABIN1 Products</a>
Background:	Alternative Names: CAIN, PPP3IN, Calcineurin inhibitor

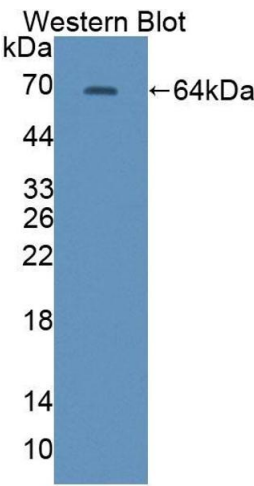
## Application Details

Application Notes:	<ul style="list-style-type: none"><li>Western blotting: 1:50-400 Immunocytochemistry in formalin fixed cells: 1:50-500 Immunohistochemistry in formalin fixed frozen section: 1:50-500 Immunohistochemistry in paraffin section: 1:10-100 Enzyme-linked Immunosorbent Assay: 1:100-1:5000 Optimal working dilutions must be determined by end user.</li></ul>
Comment:	The thermal stability is described by the loss rate. The loss rate was determined by accelerated thermal degradation test, that is, incubate the protein at 37&degC for 48h, and no obvious degradation and precipitation were observed. The loss rate is less than 5% within the expiration date under appropriate storage condition.
Restrictions:	For Research Use only

## Handling

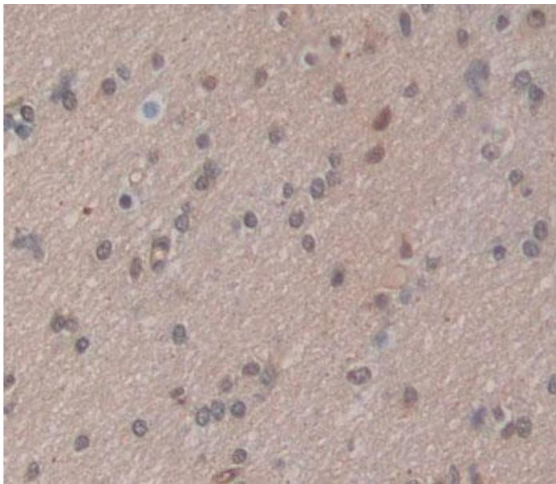
Format:	Liquid
Concentration:	Lot specific
Buffer:	PBS, pH 7.4, containing 0.02 % Sodium azide, 50 % glycerol.

## Images



### Western Blotting

**Image 1.** Figure. Western Blot; Sample: Recombinant protein.



#### Immunohistochemistry

**Image 2.** Used in DAB staining on formalin fixed paraffin-embedded brain tissue