

Datasheet for ABIN5013272  
**anti-CANT1 antibody (AA 111-403)**[Go to Product page](#)

## 3 Images

## Overview

Quantity:	100 µL
Target:	CANT1
Binding Specificity:	AA 111-403
Reactivity:	Mouse
Host:	Rabbit
Clonality:	Polyclonal
Conjugate:	This CANT1 antibody is un-conjugated
Application:	Western Blotting (WB), Immunohistochemistry (IHC), Immunocytochemistry (ICC)

## Product Details

Immunogen:	CANT1 (Val111-Ile403)
Isotype:	IgG
Specificity:	The antibody is a rabbit polyclonal antibody raised against CANT1. It has been selected for its ability to recognize CANT1 in immunohistochemical staining and western blotting.
Purification:	Antigen-specific affinity chromatography

## Target Details

Target:	CANT1
Abstract:	<a href="#">CANT1 Products</a>
Background:	Alternative Names: SCAN1, SHAPY, CAN1, Soluble Ca-Activated Nucleotidase,Isozyme 1,

# Target Details

Apyrase homolog, Putative MAPK-activating protein PM09, Putative NF-kappa-B-activating protein 107

# Application Details

Application Notes:                      • Western blotting: 1:50-400 Immunocytochemistry in formalin fixed cells: 1:50-500 Immunohistochemistry in formalin fixed frozen section: 1:50-500 Immunohistochemistry in paraffin section: 1:10-100 Enzyme-linked Immunosorbent Assay: 1:100-1:5000 Optimal working dilutions must be determined by end user.

Comment:                                      The thermal stability is described by the loss rate. The loss rate was determined by accelerated thermal degradation test, that is, incubate the protein at 37&degC for 48h, and no obvious degradation and precipitation were observed. The loss rate is less than 5% within the expiration date under appropriate storage condition.

Restrictions:                                  For Research Use only

# Handling

Format:    Liquid

Concentration:                                Lot specific

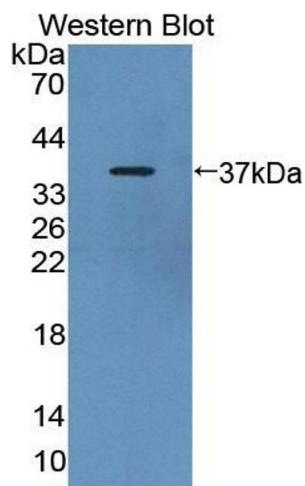
Buffer:    PBS, pH 7.4, containing 0.02 % Sodium azide, 50 % glycerol.

# Images



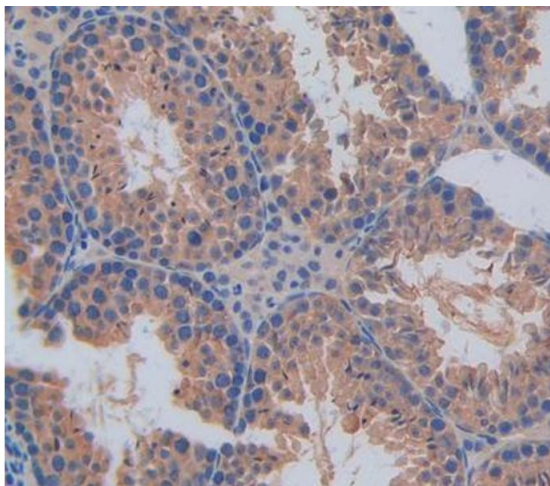
**Western Blotting**

**Image 1.** Western Blot; Sample: Human A431 cell lysate; Primary Ab: 1µg/ml Rabbit Anti-Mouse CANT1 Antibody Second Ab: 0.2µg/mL HRP-Linked Caprine Anti-Rabbit IgG Polyclonal Antibody (Catalog: SAA544Rb19)



#### Western Blotting

**Image 2.** Figure. Western Blot; Sample: Recombinant protein.



#### Immunohistochemistry

**Image 3.** Used in DAB staining on formalin fixed paraffin-embedded Kidney tissue