

Datasheet for ABIN5013291
anti-CBR1 antibody (AA 2-277)



[Go to Product page](#)

2 Images

Overview

Quantity:	100 µL
Target:	CBR1
Binding Specificity:	AA 2-277
Reactivity:	Human
Host:	Rabbit
Clonality:	Polyclonal
Conjugate:	This CBR1 antibody is un-conjugated
Application:	Western Blotting (WB), Immunohistochemistry (IHC), Immunocytochemistry (ICC), Immunoprecipitation (IP)

Product Details

Purpose:	Polyclonal Antibody to Carbonyl Reductase 1 (CBR1)
Immunogen:	RPC362Hu01Recombinant Carbonyl Reductase 1 (CBR1)
Isotype:	IgG
Specificity:	The antibody is a rabbit polyclonal antibody raised against CBR1. It has been selected for its ability to recognize CBR1 in immunohistochemical staining and western blotting.
Cross-Reactivity:	Mouse, Pig, Rat
Purification:	Antigen-specific affinity chromatography followed by Protein A affinity chromatography

Target Details

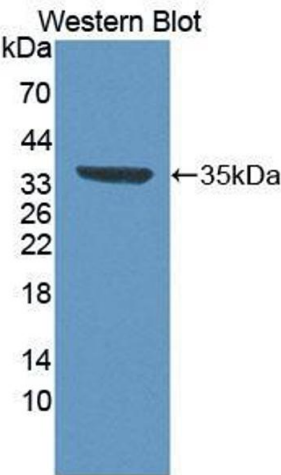
Target:	CBR1
Alternative Name:	CBR1 (CBR1 Products)
Background:	CBR, SDR21C1, CRN, Short Chain Dehydrogenase/Reductase Family 21C, Member 1, 15-hydroxyprostaglandin dehydrogenase [NADP(+)], Prostaglandin 9-ketoreductase

Application Details

Application Notes:	Western blotting: 0.2-2 µg/mL, 1:250-2500 Immunohistochemistry: 5-20 µg/mL, 1:25-100 Immunocytochemistry: 5-20 µg/mL, 1:25-100 Optimal working dilutions must be determined by end user.
Comment:	The thermal stability is described by the loss rate. The loss rate was determined by accelerated thermal degradation test, that is, incubate the protein at 37°C for 48h, and no obvious degradation and precipitation were observed. The loss rate is less than 5% within the expiration date under appropriate storage condition.
Restrictions:	For Research Use only

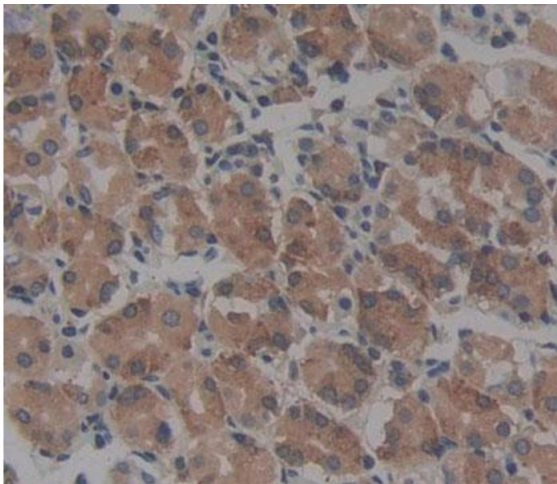
Handling

Format:	Liquid
Concentration:	500 µg/mL
Buffer:	PBS, pH 7.4, containing 0.01 % SKL, 1 mM DTT, 5 % Trehalose and Proclin300.
Preservative:	Dithiothreitol (DTT), ProClin
Storage:	4 °C, -20 °C
Storage Comment:	Store at 4°C for frequent use. Stored at -20°C in a manual defrost freezer for two year without detectable loss of activity. Avoid repeated freeze-thaw cycles.



Western Blotting

Image 1. Figure. Western Blot; Sample: Recombinant protein.



Immunohistochemistry

Image 2. Used in DAB staining on formalin fixed paraffin-embedded Kidney tissue