

Datasheet for ABIN5013292
anti-CES1 antibody (AA 31-286)[Go to Product page](#)

4 Images

Overview

Quantity:	100 µL
Target:	CES1
Binding Specificity:	AA 31-286
Reactivity:	Mouse
Host:	Rabbit
Clonality:	Polyclonal
Conjugate:	This CES1 antibody is un-conjugated
Application:	Western Blotting (WB), Immunohistochemistry (IHC), Immunocytochemistry (ICC)

Product Details

Immunogen:	CES1 (Gly31-Arg286)
Isotype:	IgG
Specificity:	The antibody is a rabbit polyclonal antibody raised against CES1. It has been selected for its ability to recognize CES1 in immunohistochemical staining and western blotting.
Purification:	Antigen-specific affinity chromatography

Target Details

Target:	CES1
Abstract:	CES1 Products
Background:	Alternative Names: ACAT, CEH, CES2, HMSE1, PCE1, SES1, TGH, Retinyl ester hydrolase, Serine

Target Details

esterase 1, Triacylglycerol hydrolase, Egasyn, Cocaine carboxylesterase, Liver Carboxylesterase 1

Pathways: [Monocarboxylic Acid Catabolic Process](#)

Application Details

Application Notes:

- Western blotting: 1:50-400 Immunocytochemistry in formalin fixed cells: 1:50-500 Immunohistochemistry in formalin fixed frozen section: 1:50-500 Immunohistochemistry in paraffin section: 1:10-100 Enzyme-linked Immunosorbent Assay: 1:100-1:5000 Optimal working dilutions must be determined by end user.

Comment: The thermal stability is described by the loss rate. The loss rate was determined by accelerated thermal degradation test, that is, incubate the protein at 37°C for 48h, and no obvious degradation and precipitation were observed. The loss rate is less than 5% within the expiration date under appropriate storage condition.

Restrictions: For Research Use only

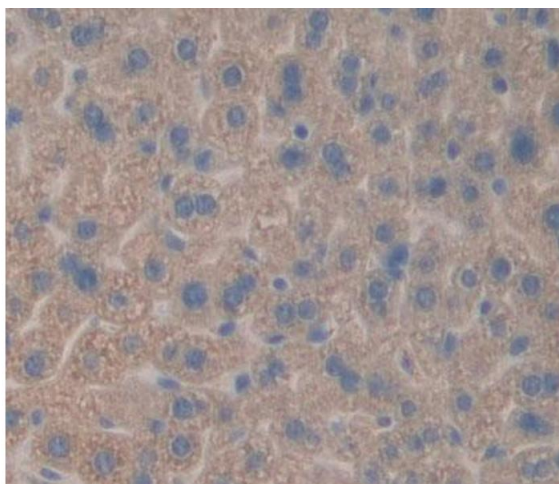
Handling

Format: Liquid

Concentration: Lot specific

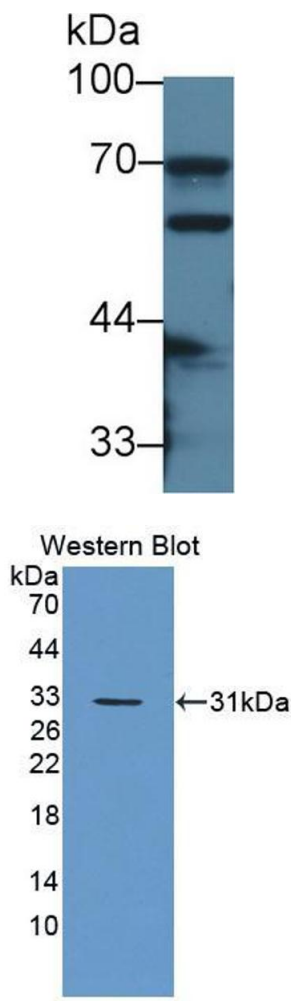
Buffer: PBS, pH 7.4, containing 0.02 % Sodium azide, 50 % glycerol.

Images



Immunohistochemistry

Image 1. Used in DAB staining on formalin fixed paraffin-embedded liver tissue



Western Blotting

Image 2. Western Blot; Sample: Mouse Small intestine lysate; Primary Ab: 2µg/ml Rabbit Anti-Mouse CES1 Antibody Second Ab: 0.2µg/mL HRP-Linked Caprine Anti-Rabbit IgG Polyclonal Antibody (Catalog: SAA544Rb19)

Western Blotting

Image 3. Figure. Western Blot; Sample: Recombinant protein.

Please check the [product details page](#) for more images. Overall 4 images are available for ABIN5013292.