

Datasheet for ABIN5013325

anti-CBY1/PGEA1 antibody (AA 7-127)[Go to Product page](#)**3** Images

Overview

| | |
|----------------------|--|
| Quantity: | 100 µL |
| Target: | CBY1/PGEA1 (CBY1) |
| Binding Specificity: | AA 7-127 |
| Reactivity: | Mouse |
| Host: | Rabbit |
| Clonality: | Polyclonal |
| Conjugate: | This CBY1/PGEA1 antibody is un-conjugated |
| Application: | Immunohistochemistry (IHC), Western Blotting (WB), Immunocytochemistry (ICC) |

Product Details

| | |
|---------------|--|
| Immunogen: | CBY1 (Ile7-Lys127) |
| Isotype: | IgG |
| Specificity: | The antibody is a rabbit polyclonal antibody raised against CBY1. It has been selected for its ability to recognize CBY1 in immunohistochemical staining and western blotting. |
| Purification: | Antigen-specific affinity chromatography |

Target Details

| | |
|-------------|--|
| Target: | CBY1/PGEA1 (CBY1) |
| Abstract: | CBY1 Products |
| Background: | Alternative Names: CBY, PGEA1, PIGEA14, arb1, Chibby, PKD2 Interactor, Golgi And |

Target Details

Endoplasmic reticulum Associated 1, ARPP-binding protein, Cytosolic leucine-rich protein

Application Details

Application Notes:

- Western blotting: 1:50-400 Immunocytochemistry in formalin fixed cells: 1:50-500 Immunohistochemistry in formalin fixed frozen section: 1:50-500 Immunohistochemistry in paraffin section: 1:10-100 Enzyme-linked Immunosorbent Assay: 1:100-1:5000 Optimal working dilutions must be determined by end user.

Comment:

The thermal stability is described by the loss rate. The loss rate was determined by accelerated thermal degradation test, that is, incubate the protein at 37°C for 48h, and no obvious degradation and precipitation were observed. The loss rate is less than 5% within the expiration date under appropriate storage condition.

Restrictions:

For Research Use only

Handling

Format:

Liquid

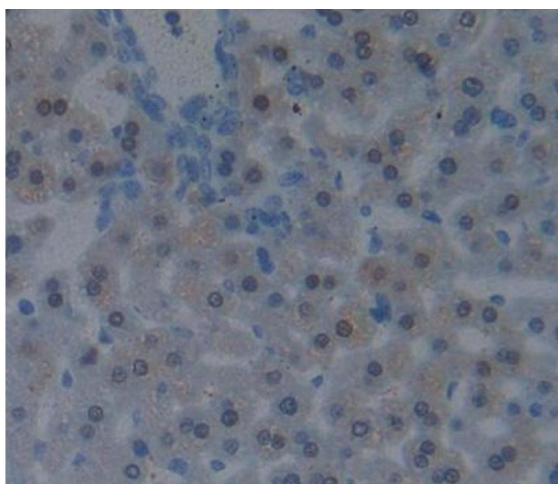
Concentration:

Lot specific

Buffer:

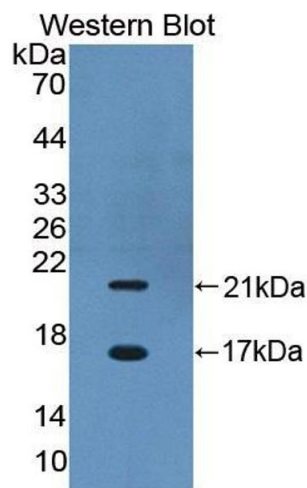
PBS, pH 7.4, containing 0.02 % Sodium azide, 50 % glycerol.

Images



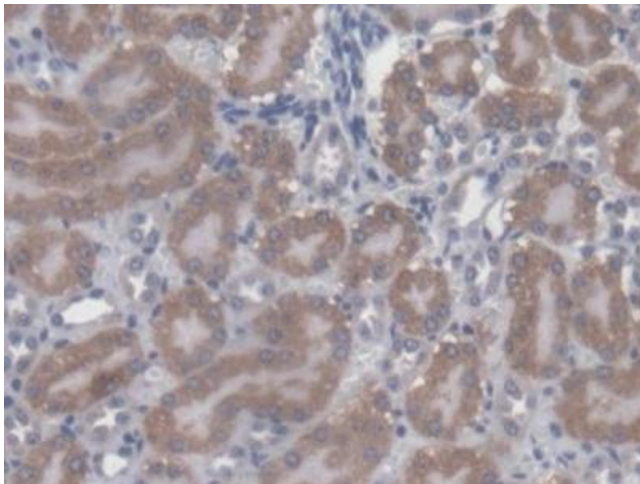
Immunohistochemistry

Image 1. Used in DAB staining on formalin fixed paraffin-embedded liver tissue



Western Blotting

Image 2. Figure. Western Blot; Sample: Recombinant protein.



Immunohistochemistry

Image 3. DAB staining on IHC-P; Samples: Mouse Kidney Tissue