

Datasheet for ABIN5013379  
**anti-C8A antibody (AA 21-300)**[Go to Product page](#)

## 2 Images

## Overview

Quantity:	100 µL
Target:	C8A
Binding Specificity:	AA 21-300
Reactivity:	Rat
Host:	Rabbit
Clonality:	Polyclonal
Conjugate:	This C8A antibody is un-conjugated
Application:	Western Blotting (WB), Immunohistochemistry (IHC), Immunocytochemistry (ICC)

## Product Details

Immunogen:	C8a (Gln21-His300)
Isotype:	IgG
Specificity:	The antibody is a rabbit polyclonal antibody raised against C8a. It has been selected for its ability to recognize C8a in immunohistochemical staining and western blotting.
Purification:	Antigen-specific affinity chromatography

## Target Details

Target:	C8A
Alternative Name:	Complement Component 8a (C8a) ( <a href="#">C8A Products</a> )
Background:	Alternative Names: Complement Component 8, Alpha Polypeptide, Complement Component 8

## Target Details

Deficiency, Type I

Pathways: [Complement System](#)

## Application Details

Application Notes: 

- Western blotting: 1:50-400 Immunocytochemistry in formalin fixed cells: 1:50-500 Immunohistochemistry in formalin fixed frozen section: 1:50-500 Immunohistochemistry in paraffin section: 1:10-100 Enzyme-linked Immunosorbent Assay: 1:100-1:5000 Optimal working dilutions must be determined by end user.

Comment: The thermal stability is described by the loss rate. The loss rate was determined by accelerated thermal degradation test, that is, incubate the protein at 37°C for 48h, and no obvious degradation and precipitation were observed. The loss rate is less than 5% within the expiration date under appropriate storage condition.

Restrictions: For Research Use only

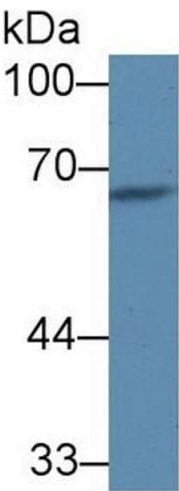
## Handling

Format: Liquid

Concentration: Lot specific

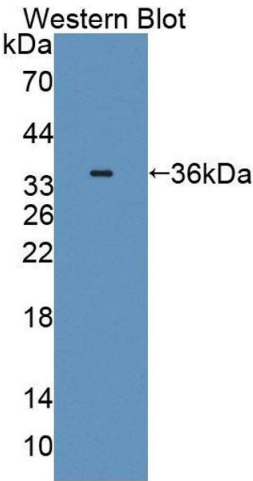
Buffer: PBS, pH 7.4, containing 0.02 % Sodium azide, 50 % glycerol.

## Images



### Western Blotting

**Image 1.** Western Blot; Sample: Rat Heart lysate; Primary Ab: 1µg/ml Rabbit Anti-Rat C8a Antibody Second Ab: 0.2µg/mL HRP-Linked Caprine Anti-Rabbit IgG Polyclonal Antibody (Catalog: SAA544Rb19)



Western Blotting

**Image 2.** Figure. Western Blot; Sample: Recombinant protein.