



Datasheet for ABIN5013384

anti-Complement Factor H antibody (AA 879-1236)



[Go to Product page](#)

2 Images

Overview

Quantity:	100 µL
Target:	Complement Factor H (CFH)
Binding Specificity:	AA 879-1236
Reactivity:	Cow
Host:	Rabbit
Clonality:	Polyclonal
Conjugate:	This Complement Factor H antibody is un-conjugated
Application:	Western Blotting (WB), Immunohistochemistry (IHC), Immunocytochemistry (ICC)

Product Details

Immunogen:	CFH (Gly879-Gly1236)
Isotype:	IgG
Specificity:	The antibody is a rabbit polyclonal antibody raised against CFH. It has been selected for its ability to recognize CFH in immunohistochemical staining and western blotting.
Purification:	Antigen-specific affinity chromatography

Target Details

Target:	Complement Factor H (CFH)
Abstract:	CFH Products
Background:	Alternative Names: CF-H, FH, FHL1, ARMD4, ARMS1, CFHL3, HF1, HF2, HUS, H Factor 2, Age-

Target Details

Related Maculopathy Susceptibility 1, Adrenomedullin binding protein

Pathways: [Complement System, Cellular Response to Molecule of Bacterial Origin](#)

Application Details

Application Notes:

- Western blotting: 1:50-400 Immunocytochemistry in formalin fixed cells: 1:50-500 Immunohistochemistry in formalin fixed frozen section: 1:50-500 Immunohistochemistry in paraffin section: 1:10-100 Enzyme-linked Immunosorbent Assay: 1:100-1:5000 Optimal working dilutions must be determined by end user.

Comment: The thermal stability is described by the loss rate. The loss rate was determined by accelerated thermal degradation test, that is, incubate the protein at 37°C for 48h, and no obvious degradation and precipitation were observed. The loss rate is less than 5% within the expiration date under appropriate storage condition.

Restrictions: For Research Use only

Handling

Format: Liquid

Concentration: Lot specific

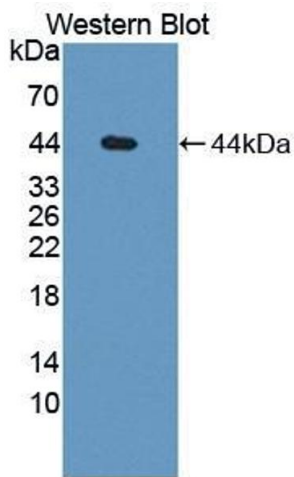
Buffer: PBS, pH 7.4, containing 0.02 % Sodium azide, 50 % glycerol.

Images



Western Blotting

Image 1. Western Blot; Sample: Bovine Heart lysate; Primary Ab: 1µg/ml Rabbit Anti-Bovine CFH Antibody Second Ab: 0.2µg/mL HRP-Linked Caprine Anti-Rabbit IgG Polyclonal Antibody (Catalog: SAA544Rb19)



Western Blotting

Image 2. Figure. Western Blot; Sample: Recombinant protein.