

Datasheet for ABIN5013391  
**anti-NR1I3 antibody (AA 1-247)**[Go to Product page](#)

## 2 Images

## Overview

Quantity:	100 µL
Target:	NR1I3
Binding Specificity:	AA 1-247
Reactivity:	Mouse
Host:	Rabbit
Clonality:	Polyclonal
Conjugate:	This NR1I3 antibody is un-conjugated
Application:	Western Blotting (WB), Immunohistochemistry (IHC), Immunocytochemistry (ICC)

## Product Details

Immunogen:	CAR (Met1-Glu247)
Isotype:	IgG
Specificity:	The antibody is a rabbit polyclonal antibody raised against CAR. It has been selected for its ability to recognize CAR in immunohistochemical staining and western blotting.
Purification:	Antigen-specific affinity chromatography

## Target Details

Target:	NR1I3
Alternative Name:	Constitutive Androstane Receptor (CAR) ( <a href="#">NR1I3 Products</a> )
Background:	Alternative Names: NR1I3, NR1-I3, CAR1, MB67, Nuclear Receptor Subfamily 1,Group I,Member

## Target Details

3, Constitutive active response, Constitutive activator of retinoid response, Orphan nuclear receptor MB67

Pathways: [Nuclear Receptor Transcription Pathway](#), [Intracellular Steroid Hormone Receptor Signaling Pathway](#), [Steroid Hormone Mediated Signaling Pathway](#)

## Application Details

Application Notes: 

- Western blotting: 1:50-400 Immunocytochemistry in formalin fixed cells: 1:50-500 Immunohistochemistry in formalin fixed frozen section: 1:50-500 Immunohistochemistry in paraffin section: 1:10-100 Enzyme-linked Immunosorbent Assay: 1:100-1:5000 Optimal working dilutions must be determined by end user.

Comment: The thermal stability is described by the loss rate. The loss rate was determined by accelerated thermal degradation test, that is, incubate the protein at 37&degC for 48h, and no obvious degradation and precipitation were observed. The loss rate is less than 5% within the expiration date under appropriate storage condition.

Restrictions: For Research Use only

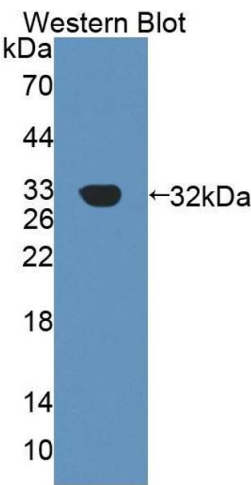
## Handling

Format: Liquid

Concentration: Lot specific

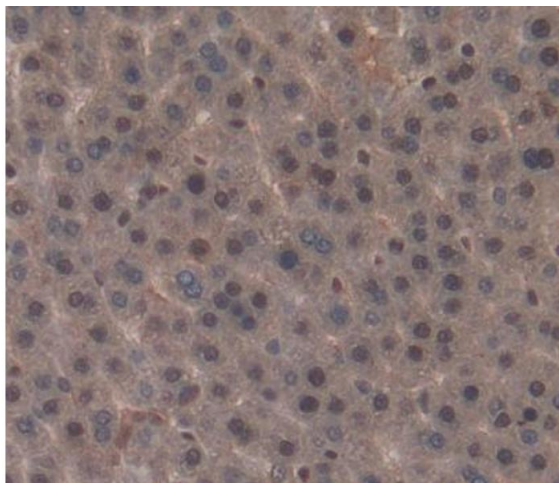
Buffer: PBS, pH 7.4, containing 0.02 % Sodium azide, 50 % glycerol.

## Images



### Western Blotting

**Image 1.** Figure. Western Blot; Sample: Recombinant protein.



#### Immunohistochemistry

**Image 2.** Used in DAB staining on formalin fixed paraffin-embedded liver tissue