

Datasheet for ABIN5013407
anti-CRYGS antibody (AA 2-178)[Go to Product page](#)

3 Images

Overview

Quantity:	100 µL
Target:	CRYGS
Binding Specificity:	AA 2-178
Reactivity:	Mouse
Host:	Rabbit
Clonality:	Polyclonal
Conjugate:	This CRYGS antibody is un-conjugated
Application:	Western Blotting (WB), Immunohistochemistry (IHC), Immunocytochemistry (ICC)

Product Details

Immunogen:	CRYgS (Ser2-Glu178)
Isotype:	IgG
Specificity:	The antibody is a rabbit polyclonal antibody raised against CRYgS. It has been selected for its ability to recognize CRYgS in immunohistochemical staining and western blotting.
Purification:	Antigen-specific affinity chromatography

Target Details

Target:	CRYGS
Alternative Name:	Crystallin Gamma S (CRYgS) (CRYGS Products)
Background:	Alternative Names: CRYG8

Application Details

Application Notes:

- Western blotting: 1:50-400 Immunocytochemistry in formalin fixed cells: 1:50-500 Immunohistochemistry in formalin fixed frozen section: 1:50-500 Immunohistochemistry in paraffin section: 1:10-100 Enzyme-linked Immunosorbent Assay: 1:100-1:5000 Optimal working dilutions must be determined by end user.

Comment:

The thermal stability is described by the loss rate. The loss rate was determined by accelerated thermal degradation test, that is, incubate the protein at 37°C for 48h, and no obvious degradation and precipitation were observed. The loss rate is less than 5% within the expiration date under appropriate storage condition.

Restrictions:

For Research Use only

Handling

Format:

Liquid

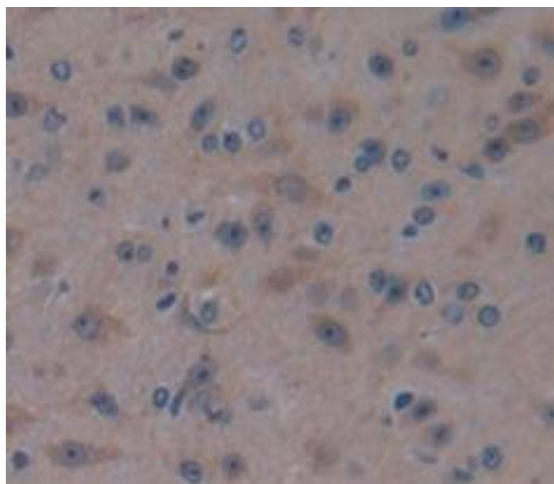
Concentration:

Lot specific

Buffer:

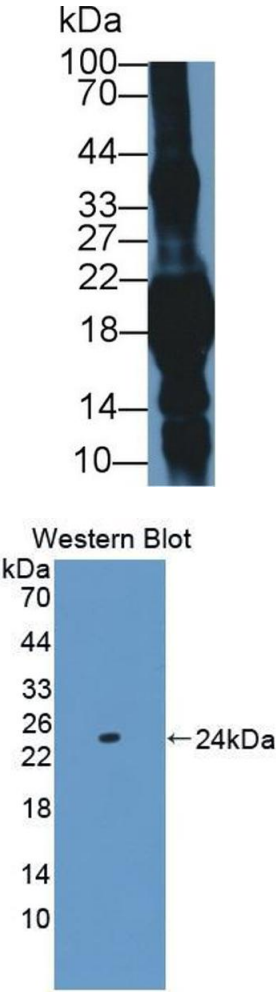
PBS, pH 7.4, containing 0.02 % Sodium azide, 50 % glycerol.

Images



Immunohistochemistry

Image 1. Used in DAB staining on formalin fixed paraffin-embedded Kidney tissue



Western Blotting

Image 2. Western Blot; Sample: Mouse Eye lysate; Primary Ab: 1µg/ml Rabbit Anti-Mouse CRYgS Antibody Second Ab: 0.2µg/mL HRP-Linked Caprine Anti-Rabbit IgG Polyclonal Antibody (Catalog: SAA544Rb19)

Western Blotting

Image 3. Figure. Western Blot; Sample: Recombinant protein.