

Datasheet for ABIN5013425
anti-CYP11A1 antibody (AA 329-526)

3 Images

[Go to Product page](#)

Overview

Quantity:	100 µL
Target:	CYP11A1
Binding Specificity:	AA 329-526
Reactivity:	Mouse
Host:	Rabbit
Clonality:	Polyclonal
Conjugate:	This CYP11A1 antibody is un-conjugated
Application:	Western Blotting (WB), Immunohistochemistry (IHC), Immunocytochemistry (ICC)

Product Details

Immunogen:	CYP11A1 (Met329-Asn526)
Isotype:	IgG
Specificity:	The antibody is a rabbit polyclonal antibody raised against CYP11A1. It has been selected for its ability to recognize CYP11A1 in immunohistochemical staining and western blotting.
Purification:	Antigen-specific affinity chromatography

Target Details

Target:	CYP11A1
Alternative Name:	Cytochrome P450 11A1 (CYP11A1) (CYP11A1 Products)
Background:	Alternative Names: CYP11A, P450SCC, Cholesterol desmolase, Cholesterol Side Chain

Target Details

Cleavage Enzyme, Cytochrome P450 Family 11 Subfamily A Polypeptide 1

Pathways:

[Metabolism of Steroid Hormones and Vitamin D](#), [Steroid Hormone Biosynthesis](#), [C21-Steroid Hormone Metabolic Process](#), [Cellular Response to Molecule of Bacterial Origin](#)

Application Details

Application Notes:

- Western blotting: 1:50-400 Immunocytochemistry in formalin fixed cells: 1:50-500 Immunohistochemistry in formalin fixed frozen section: 1:50-500 Immunohistochemistry in paraffin section: 1:10-100 Enzyme-linked Immunosorbent Assay: 1:100-1:5000 Optimal working dilutions must be determined by end user.

Comment:

The thermal stability is described by the loss rate. The loss rate was determined by accelerated thermal degradation test, that is, incubate the protein at 37°C for 48h, and no obvious degradation and precipitation were observed. The loss rate is less than 5% within the expiration date under appropriate storage condition.

Restrictions:

For Research Use only

Handling

Format:

Liquid

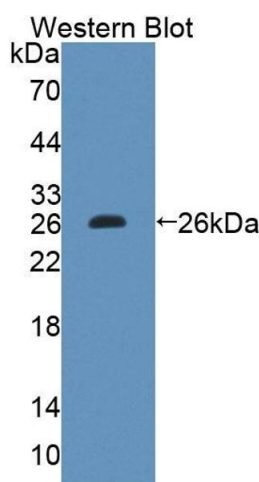
Concentration:

Lot specific

Buffer:

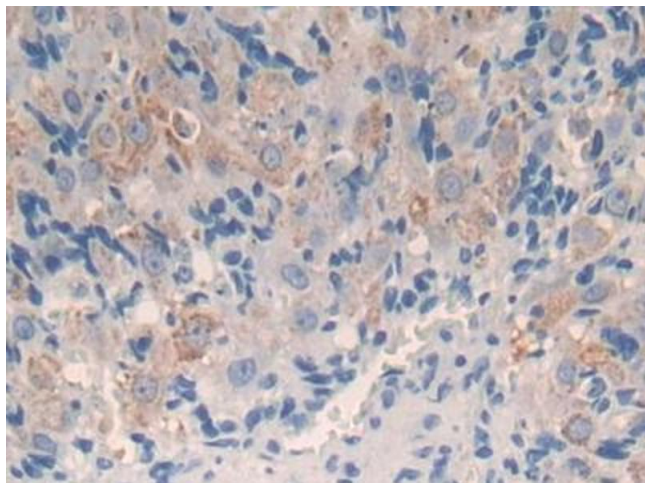
PBS, pH 7.4, containing 0.02 % Sodium azide, 50 % glycerol.

Images



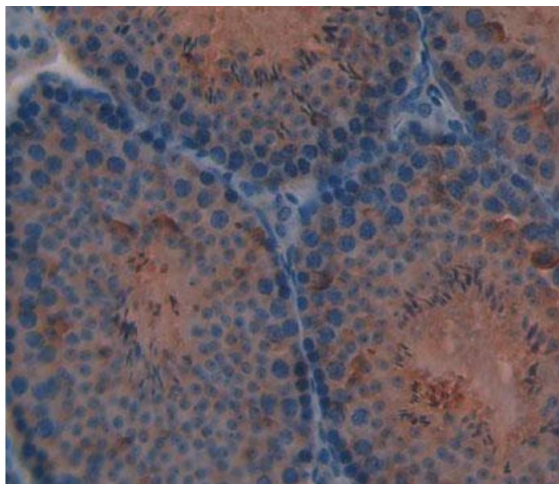
Western Blotting

Image 1. Figure. Western Blot; Sample: Recombinant protein.



Immunohistochemistry

Image 2. DAB staining on IHC-P; Samples: Mouse Ovary Tissue



Immunohistochemistry

Image 3. Used in DAB staining on formalin fixed paraffin-embedded Kidney tissue