

Datasheet for ABIN5013435

anti-CKAP2 antibody**2** Images[Go to Product page](#)

Overview

Quantity:	100 µL
Target:	CKAP2
Reactivity:	Mouse
Host:	Rabbit
Clonality:	Polyclonal
Conjugate:	This CKAP2 antibody is un-conjugated
Application:	Immunohistochemistry (IHC), Western Blotting (WB), Immunocytochemistry (ICC)

Product Details

Isotype:	IgG
Specificity:	The antibody is a rabbit polyclonal antibody raised against CKAP2. It has been selected for its ability to recognize CKAP2 in immunohistochemical staining and western blotting.
Purification:	Antigen-specific affinity chromatography

Target Details

Target:	CKAP2
Abstract:	CKAP2 Products
Background:	Alternative Names: LB1, TMAP, se20-10, CTCL tumor antigen se20-10, Tumor- and microtubule-associated protein

Application Details

Application Notes:

- Western blotting: 1:50-400 Immunocytochemistry in formalin fixed cells: 1:50-500 Immunohistochemistry in formalin fixed frozen section: 1:50-500 Immunohistochemistry in paraffin section: 1:10-100 Enzyme-linked Immunosorbent Assay: 1:100-1:5000 Optimal working dilutions must be determined by end user.

Comment:

The thermal stability is described by the loss rate. The loss rate was determined by accelerated thermal degradation test, that is, incubate the protein at 37°C for 48h, and no obvious degradation and precipitation were observed. The loss rate is less than 5% within the expiration date under appropriate storage condition.

Restrictions:

For Research Use only

Handling

Format:

Liquid

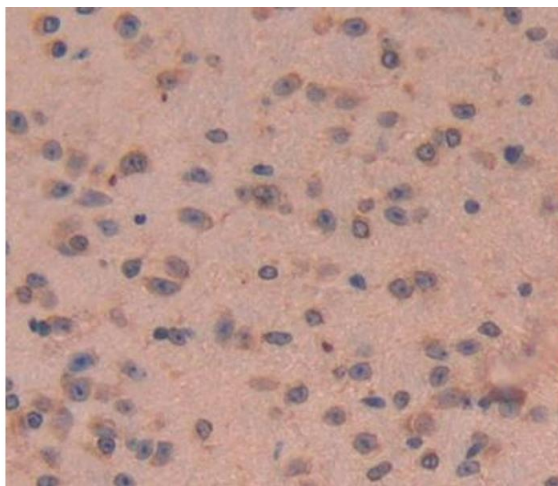
Concentration:

Lot specific

Buffer:

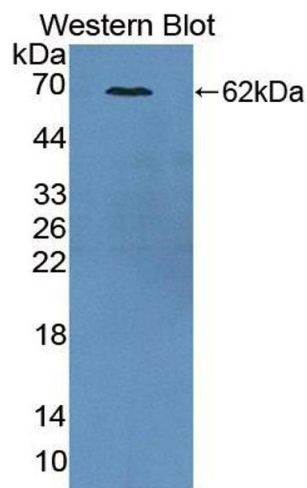
PBS, pH 7.4, containing 0.02 % Sodium azide, 50 % glycerol.

Images



Immunohistochemistry

Image 1. Used in DAB staining on formalin fixed paraffin-embedded brain tissue



Western Blotting

Image 2. Figure. Western Blot; Sample: Recombinant protein.