



[Go to Product page](#)

Datasheet for ABIN5013454

anti-Dickkopf-Like 1 (DKKL1) (AA 21-230) antibody

3 Images

Overview

| | |
|----------------------|--|
| Quantity: | 100 µL |
| Target: | Dickkopf-Like 1 (DKKL1) |
| Binding Specificity: | AA 21-230 |
| Reactivity: | Rat |
| Host: | Rabbit |
| Clonality: | Polyclonal |
| Conjugate: | Un-conjugated |
| Application: | Western Blotting (WB), Immunohistochemistry (IHC), Immunocytochemistry (ICC) |

Product Details

| | |
|---------------|--|
| Immunogen: | DKKL1 (Val21-Leu230) |
| Isotype: | IgG |
| Specificity: | The antibody is a rabbit polyclonal antibody raised against DKKL1. It has been selected for its ability to recognize DKKL1 in immunohistochemical staining and western blotting. |
| Purification: | Antigen-specific affinity chromatography |

Target Details

| | |
|-------------------|---|
| Target: | Dickkopf-Like 1 (DKKL1) |
| Alternative Name: | Dickkopf Like Protein 1 (DKKL1) (DKKL1 Products) |
| Background: | Alternative Names: SGY-1, CT34, Cancer/Testis Antigen 34, Protein soggy-1 |

Target Details

Pathways: [Positive Regulation of fat Cell Differentiation](#)

Application Details

Application Notes:

- Western blotting: 1:50-400 Immunocytochemistry in formalin fixed cells: 1:50-500 Immunohistochemistry in formalin fixed frozen section: 1:50-500 Immunohistochemistry in paraffin section: 1:10-100 Enzyme-linked Immunosorbent Assay: 1:100-1:5000 Optimal working dilutions must be determined by end user.

Comment: The thermal stability is described by the loss rate. The loss rate was determined by accelerated thermal degradation test, that is, incubate the protein at 37°C for 48h, and no obvious degradation and precipitation were observed. The loss rate is less than 5% within the expiration date under appropriate storage condition.

Restrictions: For Research Use only

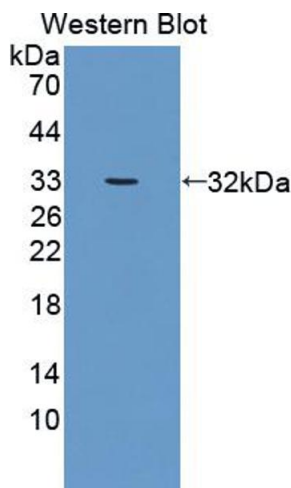
Handling

Format: Liquid

Concentration: Lot specific

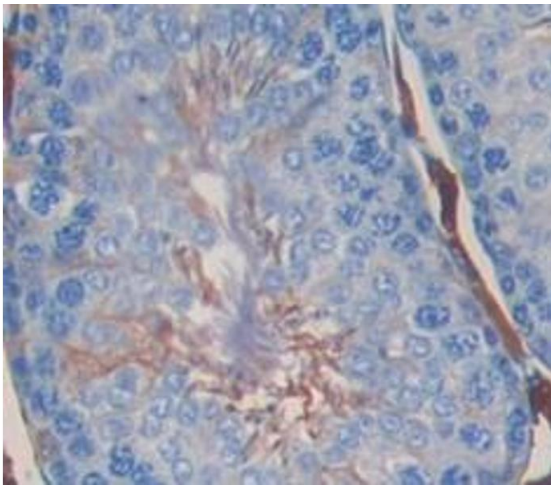
Buffer: PBS, pH 7.4, containing 0.02 % Sodium azide, 50 % glycerol.

Images



Western Blotting

Image 1. Figure. Western Blot; Sample: Recombinant protein.



Immunohistochemistry

Image 2. Used in DAB staining on formalin fixed paraffin-embedded kidney tissue



Western Blotting

Image 3. Western Blot; Sample: Rat Seminal vesicle lysate; Primary Ab: 3µg/ml Rabbit Anti-Rat DKKL1 Antibody Second Ab: 0.2µg/mL HRP-Linked Caprine Anti-Rabbit IgG Polyclonal Antibody (Catalog: SAA544Rb19)