

Datasheet for ABIN5013475  
**anti-DKC1 antibody (AA 298-465)**

## 3 Images

[Go to Product page](#)

## Overview

Quantity:	100 µL
Target:	DKC1
Binding Specificity:	AA 298-465
Reactivity:	Human
Host:	Rabbit
Clonality:	Polyclonal
Conjugate:	This DKC1 antibody is un-conjugated
Application:	Western Blotting (WB), Immunohistochemistry (IHC), Immunoprecipitation (IP), Immunocytochemistry (ICC)

## Product Details

Purpose:	Polyclonal Antibody to Dyskerin (DKC)
Immunogen:	Recombinant Dyskerin (DKC)
Isotype:	IgG
Specificity:	The antibody is a rabbit polyclonal antibody raised against DKC. It has been selected for its ability to recognize DKC in immunohistochemical staining and western blotting.
Cross-Reactivity:	Mouse, Rat
Purification:	Antigen-specific affinity chromatography followed by Protein A affinity chromatography

## Target Details

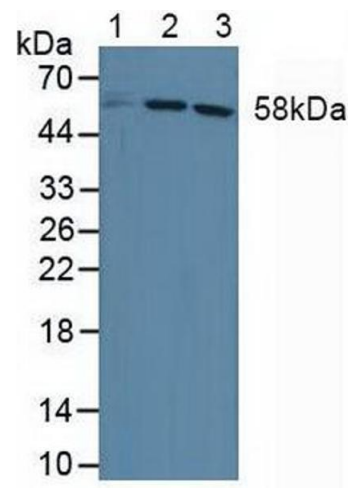
Target:	DKC1
Alternative Name:	Dyskerin ( <a href="#">DKC1 Products</a> )
Background:	DKC1, NAP57, NOLA4, NAP57, Dyskeratosis Congenita 1, H/ACA Ribonucleoprotein Complex Subunit 4, Nopp140-associated protein of 57 kDa, Nucleolar protein family A member 4
Pathways:	<a href="#">Telomere Maintenance</a>

## Application Details

Application Notes:	Western blotting: 0.5-2 µg/mL 1:250-1000 Immunohistochemistry: 5-20 µg/mL 1:25-100 Immunocytochemistry: 5-20 µg/mL 1:25-100 Optimal working dilutions must be determined by end user.
Comment:	The thermal stability is described by the loss rate. The loss rate was determined by accelerated thermal degradation test, that is, incubate the protein at 37°C for 48h, and no obvious degradation and precipitation were observed. The loss rate is less than 5% within the expiration date under appropriate storage condition.
Restrictions:	For Research Use only

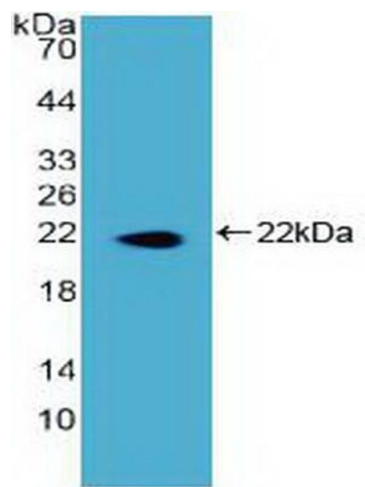
## Handling

Format:	Liquid
Concentration:	Lot specific
Buffer:	0.01M PBS, pH 7.4, containing 0.05 % Proclin-300, 50 % glycerol.
Preservative:	ProClin
Storage:	4 °C,-20 °C
Storage Comment:	Store at 4°C for frequent use. Stored at -20°C in a manual defrost freezer for two year without detectable loss of activity. Avoid repeated freeze-thaw cycles.
Expiry Date:	24 months



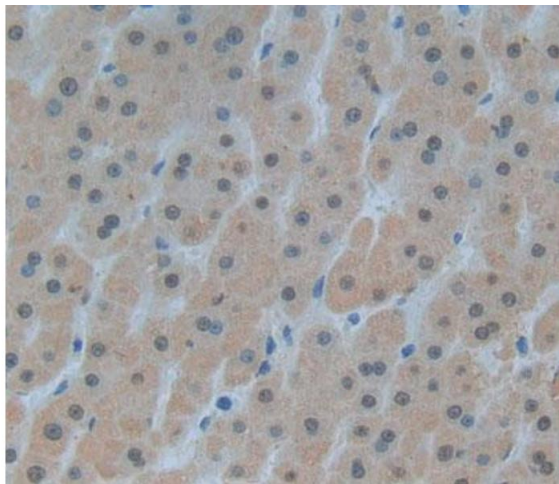
Western Blotting

**Image 1.** Figure. Western Blot; Sample: Lane1: Human HepG2 Cells; Lane2: Human Jurkat Cells; Lane3: Human Hela Cells.



Western Blotting

**Image 2.** Figure. Western Blot; Sample: Recombinant DKC, Human.



Immunohistochemistry

**Image 3.** Used in DAB staining on fromalin fixed paraffin-embedded liver tissue