

Datasheet for ABIN5013480  
**anti-DMPK antibody (AA 1-201)**

## 2 Images

[Go to Product page](#)

## Overview

Quantity:	100 µL
Target:	DMPK
Binding Specificity:	AA 1-201
Reactivity:	Human
Host:	Rabbit
Clonality:	Polyclonal
Conjugate:	This DMPK antibody is un-conjugated
Application:	Western Blotting (WB), Immunohistochemistry (IHC), Immunocytochemistry (ICC)

## Product Details

Immunogen:	DMPK (Met1-Ile201)
Isotype:	IgG
Specificity:	The antibody is a rabbit polyclonal antibody raised against DMPK. It has been selected for its ability to recognize DMPK in immunohistochemical staining and western blotting.
Purification:	Antigen-specific affinity chromatography

## Target Details

Target:	DMPK
Alternative Name:	Dystrophia Myotonica Protein Kinase (DMPK) ( <a href="#">DMPK Products</a> )
Background:	Alternative Names: DM, DM1, DM1PK, DMK, MDPK, MT-PK, Myotonic Dystrophy Protein Kinase,

## Target Details

Myotonin-Protein Kinase, Dystrophia Myotonica 1, Thymopoietin Homolog

Pathways: [Regulation of Muscle Cell Differentiation](#), [Synaptic Membrane](#), [Skeletal Muscle Fiber Development](#)

## Application Details

Application Notes: 

- Western blotting: 1:50-400 Immunocytochemistry in formalin fixed cells: 1:50-500 Immunohistochemistry in formalin fixed frozen section: 1:50-500 Immunohistochemistry in paraffin section: 1:10-100 Enzyme-linked Immunosorbent Assay: 1:100-1:5000 Optimal working dilutions must be determined by end user.

Comment: The thermal stability is described by the loss rate. The loss rate was determined by accelerated thermal degradation test, that is, incubate the protein at 37°C for 48h, and no obvious degradation and precipitation were observed. The loss rate is less than 5% within the expiration date under appropriate storage condition.

Restrictions: For Research Use only

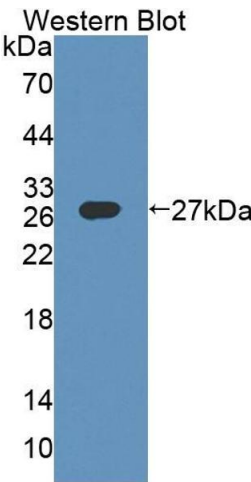
## Handling

Format: Liquid

Concentration: Lot specific

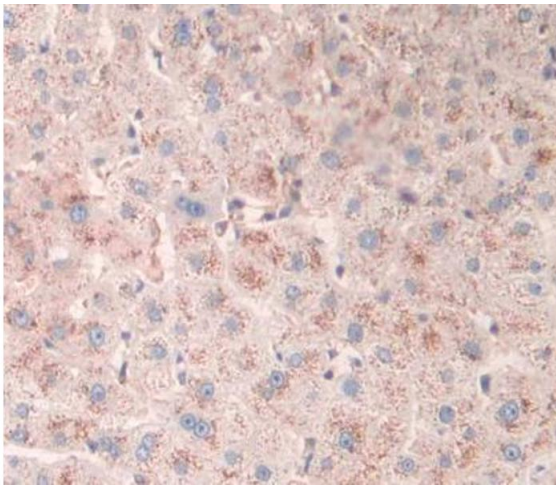
Buffer: PBS, pH 7.4, containing 0.02 % Sodium azide, 50 % glycerol.

## Images



### Western Blotting

**Image 1.** Figure. Western Blot; Sample: Recombinant protein.



#### Immunohistochemistry

**Image 2.** Used in DAB staining on formalin fixed paraffin-embedded liver tissue