

Datasheet for ABIN5013495

**anti-Endothelin 2 antibody (AA 32-178)****2** Images[Go to Product page](#)

## Overview

Quantity:	100 µL
Target:	Endothelin 2 (EDN2)
Binding Specificity:	AA 32-178
Reactivity:	Human
Host:	Rabbit
Clonality:	Polyclonal
Conjugate:	This Endothelin 2 antibody is un-conjugated
Application:	Immunohistochemistry (IHC), Western Blotting (WB), Immunocytochemistry (ICC)

## Product Details

Immunogen:	EDN2 (Gln32-Arg178)
Isotype:	IgG
Specificity:	The antibody is a rabbit polyclonal antibody raised against EDN2. It has been selected for its ability to recognize EDN2 in immunohistochemical staining and western blotting.
Purification:	Antigen-specific affinity chromatography

## Target Details

Target:	Endothelin 2 (EDN2)
Abstract:	<a href="#">EDN2 Products</a>
Background:	Alternative Names: ET2, PPET2, Preproendothelin-2

## Target Details

Pathways: [Hormone Activity](#), [Negative Regulation of Hormone Secretion](#), [Regulation of Systemic Arterial Blood Pressure by Hormones](#)

## Application Details

Application Notes: 

- Western blotting: 1:50-400 Immunocytochemistry in formalin fixed cells: 1:50-500 Immunohistochemistry in formalin fixed frozen section: 1:50-500 Immunohistochemistry in paraffin section: 1:10-100 Enzyme-linked Immunosorbent Assay: 1:100-1:5000 Optimal working dilutions must be determined by end user.

Comment: The thermal stability is described by the loss rate. The loss rate was determined by accelerated thermal degradation test, that is, incubate the protein at 37°C for 48h, and no obvious degradation and precipitation were observed. The loss rate is less than 5% within the expiration date under appropriate storage condition.

Restrictions: For Research Use only

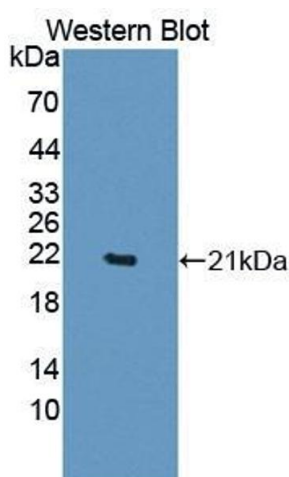
## Handling

Format: Liquid

Concentration: Lot specific

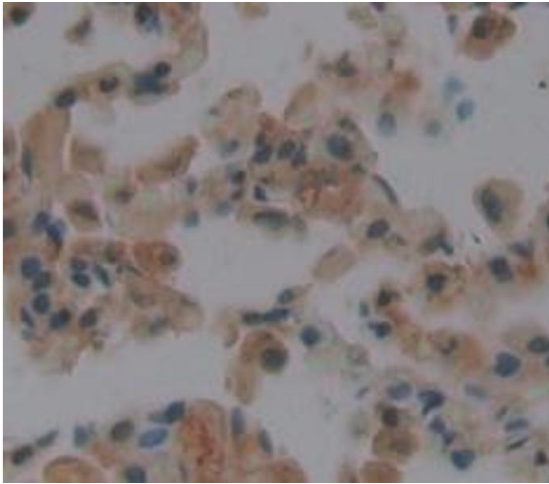
Buffer: PBS, pH 7.4, containing 0.02 % Sodium azide, 50 % glycerol.

## Images



### Western Blotting

**Image 1.** Figure. Western Blot; Sample: Recombinant protein.



#### Immunohistochemistry

**Image 2.** Used in DAB staining on formalin fixed paraffin-embedded Kidney tissue