

Datasheet for ABIN5013496

anti-Endothelin 3 antibody (AA 20-167)[Go to Product page](#)**3** Images

Overview

Quantity:	100 µL
Target:	Endothelin 3 (EDN3)
Binding Specificity:	AA 20-167
Reactivity:	Rat
Host:	Rabbit
Clonality:	Polyclonal
Conjugate:	This Endothelin 3 antibody is un-conjugated
Application:	Western Blotting (WB), Immunohistochemistry (IHC), Immunocytochemistry (ICC)

Product Details

Immunogen:	EDN3 (Leu20-Pro167)
Isotype:	IgG
Specificity:	The antibody is a rabbit polyclonal antibody raised against EDN3. It has been selected for its ability to recognize EDN3 in immunohistochemical staining and western blotting.
Purification:	Antigen-specific affinity chromatography

Target Details

Target:	Endothelin 3 (EDN3)
Abstract:	EDN3 Products
Background:	Alternative Names: ET3, PPET3, Preproendothelin-3

Target Details

Pathways: [Hormone Transport](#), [Negative Regulation of Hormone Secretion](#), [Regulation of Systemic Arterial Blood Pressure by Hormones](#)

Application Details

Application Notes:

- Western blotting: 1:50-400 Immunocytochemistry in formalin fixed cells: 1:50-500 Immunohistochemistry in formalin fixed frozen section: 1:50-500 Immunohistochemistry in paraffin section: 1:10-100 Enzyme-linked Immunosorbent Assay: 1:100-1:5000 Optimal working dilutions must be determined by end user.

Comment: The thermal stability is described by the loss rate. The loss rate was determined by accelerated thermal degradation test, that is, incubate the protein at 37°C for 48h, and no obvious degradation and precipitation were observed. The loss rate is less than 5% within the expiration date under appropriate storage condition.

Restrictions: For Research Use only

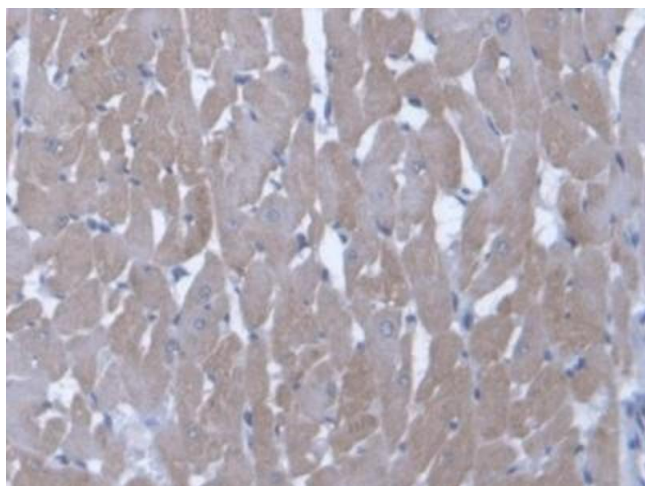
Handling

Format: Liquid

Concentration: Lot specific

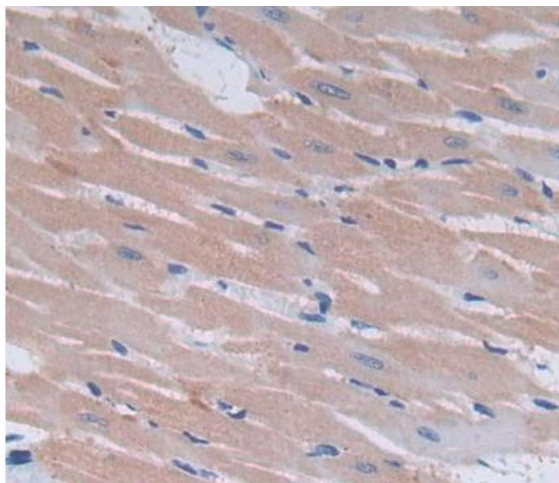
Buffer: PBS, pH 7.4, containing 0.02 % Sodium azide, 50 % glycerol.

Images



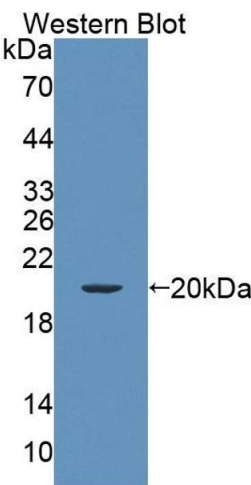
Immunohistochemistry

Image 1. DAB staining on IHC-P; Samples: Rat Cardiac Muscle Tissue



Immunohistochemistry

Image 2. Used in DAB staining on fromalin fixed paraffin-embedded heart tissue



Western Blotting

Image 3. Figure. Western Blot; Sample: Recombinant protein.