



[Go to Product page](#)

Datasheet for ABIN5013521 **anti-ERI1 antibody (AA 1-345)**

3 Images

Overview

| | |
|----------------------|--|
| Quantity: | 100 µL |
| Target: | ERI1 |
| Binding Specificity: | AA 1-345 |
| Reactivity: | Mouse |
| Host: | Rabbit |
| Clonality: | Polyclonal |
| Conjugate: | This ERI1 antibody is un-conjugated |
| Application: | Western Blotting (WB), Immunohistochemistry (IHC), Immunocytochemistry (ICC) |

Product Details

| | |
|---------------|--|
| Immunogen: | ERI1 (Met1-Lys345) |
| Isotype: | IgG |
| Specificity: | The antibody is a rabbit polyclonal antibody raised against ERI1. It has been selected for its ability to recognize ERI1 in immunohistochemical staining and western blotting. |
| Purification: | Antigen-specific affinity chromatography |

Target Details

| | |
|-------------|--|
| Target: | ERI1 |
| Abstract: | ERI1 Products |
| Background: | Alternative Names: THEX1, 3'HEXO, 3'-5' exonuclease ERI1, Histone mRNA 3'-end-specific |

Target Details

exoribonuclease, Enhanced RNAi Three Prime mRNA Exonuclease Homolog 1

Application Details

Application Notes:

- Western blotting: 1:50-400 Immunocytochemistry in formalin fixed cells: 1:50-500 Immunohistochemistry in formalin fixed frozen section: 1:50-500 Immunohistochemistry in paraffin section: 1:10-100 Enzyme-linked Immunosorbent Assay: 1:100-1:5000 Optimal working dilutions must be determined by end user.

Comment: The thermal stability is described by the loss rate. The loss rate was determined by accelerated thermal degradation test, that is, incubate the protein at 37°C for 48h, and no obvious degradation and precipitation were observed. The loss rate is less than 5% within the expiration date under appropriate storage condition.

Restrictions: For Research Use only

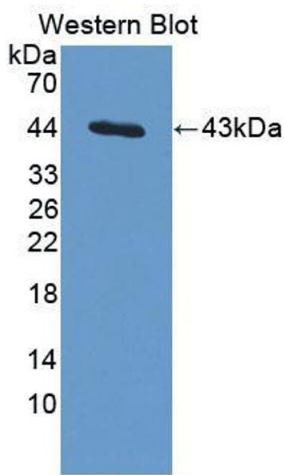
Handling

Format: Liquid

Concentration: Lot specific

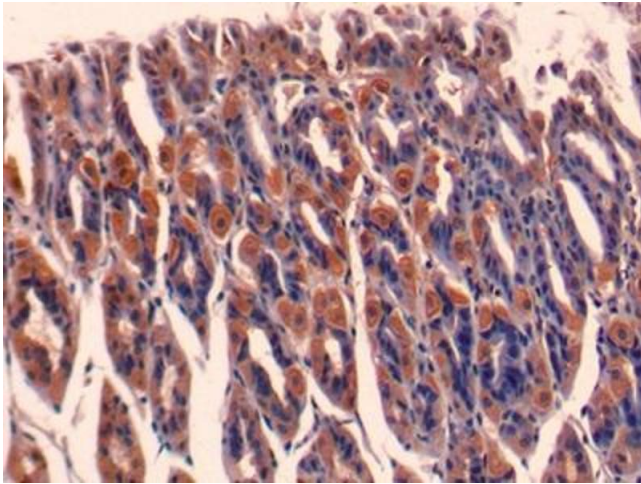
Buffer: PBS, pH 7.4, containing 0.02 % Sodium azide, 50 % glycerol.

Images



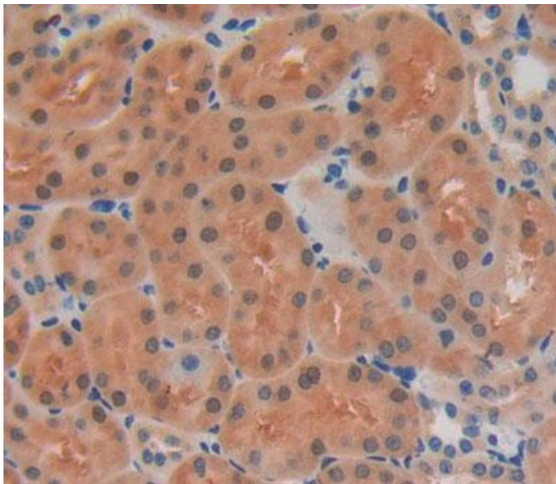
Western Blotting

Image 1. Figure. Western Blot; Sample: Recombinant protein.



Immunohistochemistry

Image 2. DAB staining on IHC-P; Samples: Mouse Stomach Tissue



Immunohistochemistry

Image 3. Used in DAB staining on formalin fixed paraffin-embedded kidney tissue