

Datasheet for ABIN5013523
anti-FBXW7 antibody (AA 312-545)



[Go to Product page](#)

2 Images

Overview

Quantity:	100 µL
Target:	FBXW7
Binding Specificity:	AA 312-545
Reactivity:	Mouse
Host:	Rabbit
Clonality:	Polyclonal
Conjugate:	This FBXW7 antibody is un-conjugated
Application:	Western Blotting (WB), Immunohistochemistry (IHC), Immunoprecipitation (IP), Immunocytochemistry (ICC)

Product Details

Purpose:	Polyclonal Antibody to F-Box And WD Repeat Domain Containing Protein 7 (FBXW7)
Immunogen:	FBXW7 (Cys312-His545)
Isotype:	IgG
Specificity:	The antibody is a rabbit polyclonal antibody raised against FBXW7. It has been selected for its ability to recognize FBXW7 in immunohistochemical staining and western blotting.
Purification:	Antigen-specific affinity chromatography followed by Protein A affinity chromatography

Target Details

Target:	FBXW7
---------	-------

Target Details

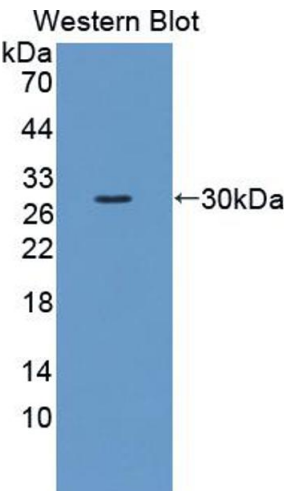
Alternative Name:	FBXW7 (FBXW7 Products)
Background:	AGO, CDC4, FBW7, FBX30, FBXW6, SEL-10, SEL10, Archipelago Homolog, F-box and WD-40 domain-containing protein 7
Pathways:	Notch Signaling , EGFR Signaling Pathway

Application Details

Application Notes:	Western blotting: 0.2-2 µg/mL, 1:250-2500 Immunohistochemistry: 5-20 µg/mL, 1:25-100 Immunocytochemistry: 5-20 µg/mL, 1:25-100 Optimal working dilutions must be determined by end user.
Comment:	The thermal stability is described by the loss rate. The loss rate was determined by accelerated thermal degradation test, that is, incubate the protein at 37°C for 48h, and no obvious degradation and precipitation were observed. The loss rate is less than 5% within the expiration date under appropriate storage condition.
Restrictions:	For Research Use only

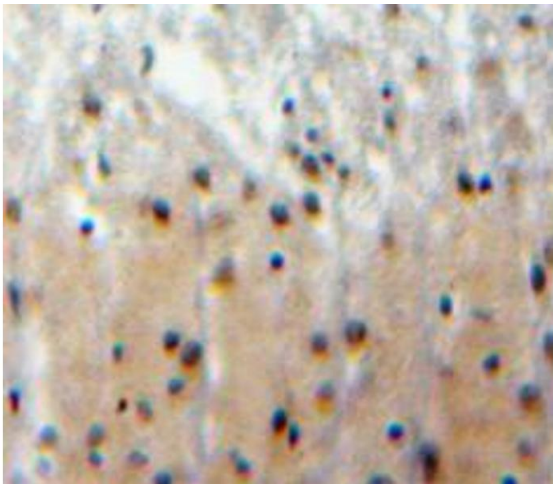
Handling

Format:	Liquid
Concentration:	500 µg/mL
Buffer:	PBS, pH 7.4, containing 0.02 % Sodium azide, 50 % glycerol.
Preservative:	Sodium azide
Storage:	4 °C, -20 °C
Storage Comment:	Store at 4°C for frequent use. Stored at -20°C in a manual defrost freezer for two year without detectable loss of activity. Avoid repeated freeze-thaw cycles.



Western Blotting

Image 1. Figure. Western Blot; Sample: Recombinant protein.



Immunohistochemistry

Image 2. Used in DAB staining on formalin fixed paraffin-embedded brain tissue