

Datasheet for ABIN5013581  
**anti-GRK6 antibody (AA 186-448)**[Go to Product page](#)

## 3 Images

## Overview

Quantity:	100 µL
Target:	GRK6
Binding Specificity:	AA 186-448
Reactivity:	Human
Host:	Rabbit
Clonality:	Polyclonal
Conjugate:	This GRK6 antibody is un-conjugated
Application:	Western Blotting (WB), Immunohistochemistry (IHC), Immunocytochemistry (ICC)

## Product Details

Immunogen:	GRK6 (Phe186-Phe448)
Isotype:	IgG
Specificity:	The antibody is a rabbit polyclonal antibody raised against GRK6. It has been selected for its ability to recognize GRK6 in immunohistochemical staining and western blotting.
Purification:	Antigen-specific affinity chromatography

## Target Details

Target:	GRK6
Alternative Name:	G Protein Coupled Receptor Kinase 6 (GRK6) ( <a href="#">GRK6 Products</a> )
Background:	Alternative Names: GPRK6, G protein-coupled receptor kinase GRK6

## Target Details

Pathways: [Myometrial Relaxation and Contraction](#), [Regulation of G-Protein Coupled Receptor Protein Signaling](#), [CXCR4-mediated Signaling Events](#), [Negative Regulation of Transporter Activity](#)

## Application Details

Application Notes: 

- Western blotting: 1:50-400 Immunocytochemistry in formalin fixed cells: 1:50-500 Immunohistochemistry in formalin fixed frozen section: 1:50-500 Immunohistochemistry in paraffin section: 1:10-100 Enzyme-linked Immunosorbent Assay: 1:100-1:5000 Optimal working dilutions must be determined by end user.

Comment: The thermal stability is described by the loss rate. The loss rate was determined by accelerated thermal degradation test, that is, incubate the protein at 37&degC for 48h, and no obvious degradation and precipitation were observed. The loss rate is less than 5% within the expiration date under appropriate storage condition.

Restrictions: For Research Use only

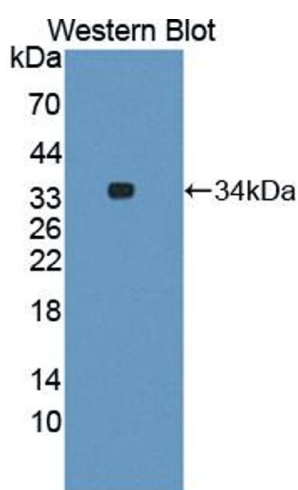
## Handling

Format: Liquid

Concentration: Lot specific

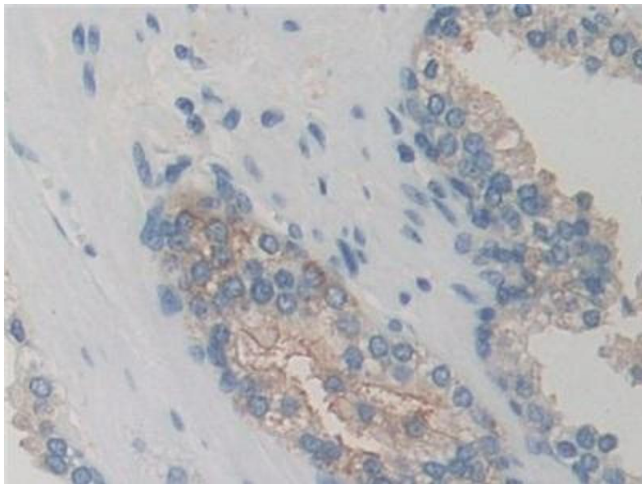
Buffer: PBS, pH 7.4, containing 0.02 % Sodium azide, 50 % glycerol.

## Images



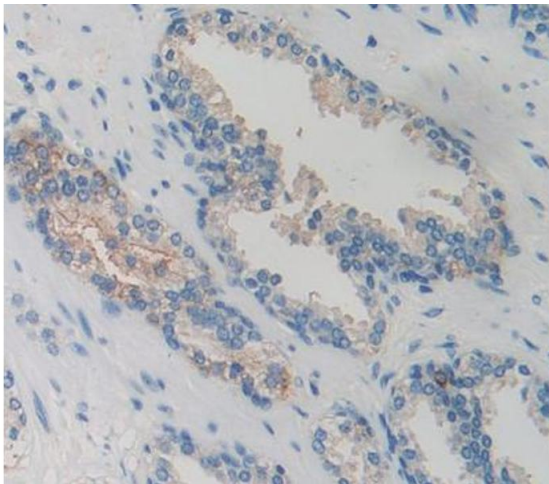
### Western Blotting

**Image 1.** Figure. Western Blot; Sample: Recombinant protein.



#### Immunohistochemistry

**Image 2.** DAB staining on IHC-P; Samples: Human Prostate Tissue



#### Immunohistochemistry

**Image 3.** Used in DAB staining on formalin fixed paraffin-embedded Kidney tissue