



[Go to Product page](#)

Datasheet for ABIN5013590
anti-LGALS12 antibody (AA 1-314)

2 Images

Overview

Quantity:	100 µL
Target:	LGALS12
Binding Specificity:	AA 1-314
Reactivity:	Pig
Host:	Rabbit
Clonality:	Polyclonal
Conjugate:	This LGALS12 antibody is un-conjugated
Application:	Western Blotting (WB), Immunohistochemistry (IHC), Immunocytochemistry (ICC)

Product Details

Immunogen:	GAL12 (Met1-Tyr314)
Isotype:	IgG
Specificity:	The antibody is a rabbit polyclonal antibody raised against GAL12. It has been selected for its ability to recognize GAL12 in immunohistochemical staining and western blotting.
Purification:	Antigen-specific affinity chromatography

Target Details

Target:	LGALS12
Alternative Name:	Galactin 12 (GAL12) (LGALS12 Products)
Background:	Alternative Names: LGALS12, GRIP1, Lectin, Galactoside-Binding Soluble 12, Galectin-related

Target Details

inhibitor of proliferation

Application Details

Application Notes:

- Western blotting: 1:50-400 Immunocytochemistry in formalin fixed cells: 1:50-500 Immunohistochemistry in formalin fixed frozen section: 1:50-500 Immunohistochemistry in paraffin section: 1:10-100 Enzyme-linked Immunosorbent Assay: 1:100-1:5000 Optimal working dilutions must be determined by end user.

Comment:

The thermal stability is described by the loss rate. The loss rate was determined by accelerated thermal degradation test, that is, incubate the protein at 37°C for 48h, and no obvious degradation and precipitation were observed. The loss rate is less than 5% within the expiration date under appropriate storage condition.

Restrictions:

For Research Use only

Handling

Format:

Liquid

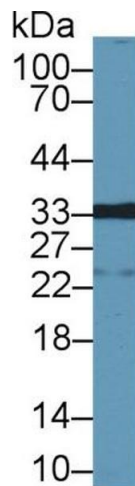
Concentration:

Lot specific

Buffer:

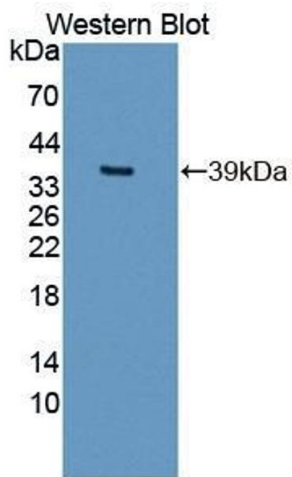
PBS, pH 7.4, containing 0.02 % Sodium azide, 50 % glycerol.

Images



Western Blotting

Image 1. Western Blot; Sample: Porcine Colon lysate; Primary Ab: 1µg/ml Rabbit Anti-Porcine GAL12 Antibody Second Ab: 0.2µg/mL HRP-Linked Caprine Anti-Rabbit IgG Polyclonal Antibody (Catalog: SAA544Rb19)



Western Blotting

Image 2. Figure. Western Blot; Sample: Recombinant protein.