

Datasheet for ABIN5013606
anti-GGPS1 antibody (AA 1-290)

2 Images

[Go to Product page](#)

Overview

Quantity:	100 µL
Target:	GGPS1
Binding Specificity:	AA 1-290
Reactivity:	Human
Host:	Rabbit
Clonality:	Polyclonal
Conjugate:	This GGPS1 antibody is un-conjugated
Application:	Western Blotting (WB), Immunohistochemistry (IHC), Immunocytochemistry (ICC)

Product Details

Immunogen:	GGPS1 (Met1-His290)
Isotype:	IgG
Specificity:	The antibody is a rabbit polyclonal antibody raised against GGPS1. It has been selected for its ability to recognize GGPS1 in immunohistochemical staining and western blotting.
Purification:	Antigen-specific affinity chromatography

Target Details

Target:	GGPS1
Abstract:	GGPS1 Products
Background:	Alternative Names: GGPPS1, (2E,6E)-farnesyl diphosphate synthase,

Target Details

Dimethylallyltranstransferase, Farnesyltranstransferase, Geranylgeranyl diphosphate synthase, Geranyltranstransferase

Application Details

Application Notes:

- Western blotting: 1:50-400 Immunocytochemistry in formalin fixed cells: 1:50-500 Immunohistochemistry in formalin fixed frozen section: 1:50-500 Immunohistochemistry in paraffin section: 1:10-100 Enzyme-linked Immunosorbent Assay: 1:100-1:5000 Optimal working dilutions must be determined by end user.

Comment:

The thermal stability is described by the loss rate. The loss rate was determined by accelerated thermal degradation test, that is, incubate the protein at 37°C for 48h, and no obvious degradation and precipitation were observed. The loss rate is less than 5% within the expiration date under appropriate storage condition.

Restrictions:

For Research Use only

Handling

Format:

Liquid

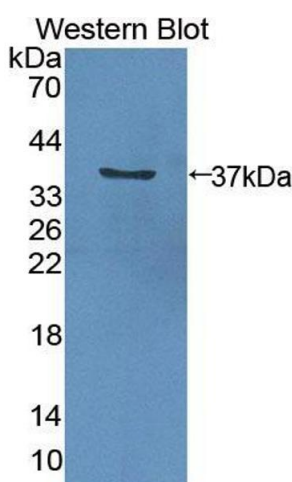
Concentration:

Lot specific

Buffer:

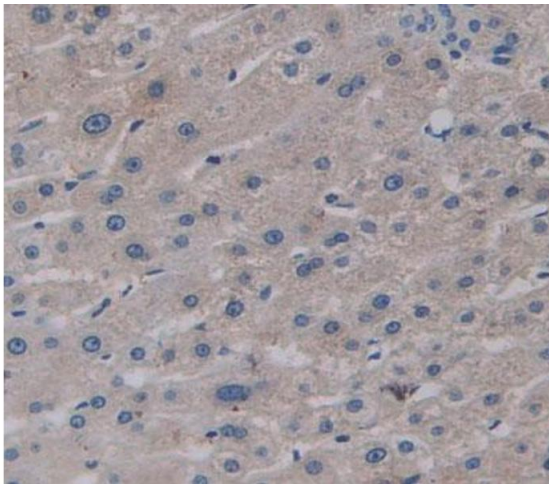
PBS, pH 7.4, containing 0.02 % Sodium azide, 50 % glycerol.

Images



Western Blotting

Image 1. Figure. Western Blot; Sample: Recombinant protein.



Immunohistochemistry

Image 2. Used in DAB staining on formalin fixed paraffin-embedded Kidney tissue