

Datasheet for ABIN5013607
anti-NR6A1 antibody (AA 282-480)

2 Images

[Go to Product page](#)

Overview

Quantity:	100 µL
Target:	NR6A1
Binding Specificity:	AA 282-480
Reactivity:	Human
Host:	Rabbit
Clonality:	Polyclonal
Conjugate:	This NR6A1 antibody is un-conjugated
Application:	Western Blotting (WB), Immunohistochemistry (IHC), Immunocytochemistry (ICC)

Product Details

Immunogen:	GCNF (Glu282-Glu480)
Isotype:	IgG
Specificity:	The antibody is a rabbit polyclonal antibody raised against GCNF. It has been selected for its ability to recognize GCNF in immunohistochemical staining and western blotting.
Purification:	Antigen-specific affinity chromatography

Target Details

Target:	NR6A1
Alternative Name:	Germ Cell Nuclear Factor (GCNF) (NR6A1 Products)
Background:	Alternative Names: NR6A1, NR6-A1, GCNF1, NR61, RTR, Nuclear Receptor Subfamily 6, Group

Target Details

A,Member 1, Retinoid receptor-related testis-specific receptor

Pathways: [Nuclear Receptor Transcription Pathway](#), [Steroid Hormone Mediated Signaling Pathway](#)

Application Details

Application Notes:

- Western blotting: 1:50-400 Immunocytochemistry in formalin fixed cells: 1:50-500 Immunohistochemistry in formalin fixed frozen section: 1:50-500 Immunohistochemistry in paraffin section: 1:10-100 Enzyme-linked Immunosorbent Assay: 1:100-1:5000 Optimal working dilutions must be determined by end user.

Comment: The thermal stability is described by the loss rate. The loss rate was determined by accelerated thermal degradation test, that is, incubate the protein at 37°C for 48h, and no obvious degradation and precipitation were observed. The loss rate is less than 5% within the expiration date under appropriate storage condition.

Restrictions: For Research Use only

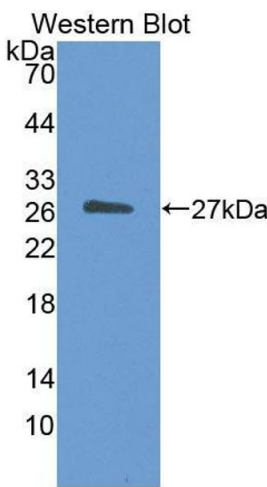
Handling

Format: Liquid

Concentration: Lot specific

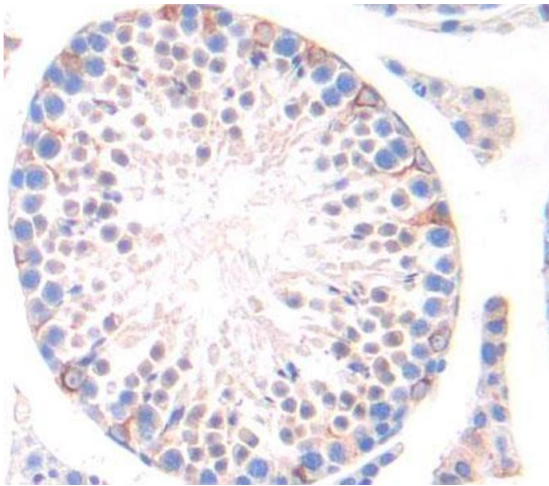
Buffer: PBS, pH 7.4, containing 0.02 % Sodium azide, 50 % glycerol.

Images



Western Blotting

Image 1. Figure. Western Blot; Sample: Recombinant protein.



Immunohistochemistry

Image 2. Used in DAB staining on formalin fixed paraffin-embedded Kidney tissue