

Datasheet for ABIN5013678

anti-Sonic Hedgehog antibody (AA 237-399)[Go to Product page](#)

4 Images

Overview

Quantity:	100 µL
Target:	Sonic Hedgehog (SHH)
Binding Specificity:	AA 237-399
Reactivity:	Rat
Host:	Rabbit
Clonality:	Polyclonal
Conjugate:	This Sonic Hedgehog antibody is un-conjugated
Application:	Western Blotting (WB), Immunohistochemistry (IHC), Immunocytochemistry (ICC)

Product Details

Immunogen:	SHH (Ser237-Arg399)
Isotype:	IgG
Specificity:	The antibody is a rabbit polyclonal antibody raised against SHH. It has been selected for its ability to recognize SHH in immunohistochemical staining and western blotting.
Purification:	Antigen-specific affinity chromatography

Target Details

Target:	Sonic Hedgehog (SHH)
Alternative Name:	Hedgehog Homolog, Sonic (SHH) (SHH Products)
Background:	Alternative Names: HHG1, HLP3, HPE3, SMMCI, SHHN, SHH-N

Target Details

Pathways: [Hedgehog Signaling](#), [Dopaminergic Neurogenesis](#), [Regulation of Muscle Cell Differentiation](#), [Tube Formation](#), [Skeletal Muscle Fiber Development](#)

Application Details

Application Notes:

- Western blotting: 1:50-400 Immunocytochemistry in formalin fixed cells: 1:50-500 Immunohistochemistry in formalin fixed frozen section: 1:50-500 Immunohistochemistry in paraffin section: 1:10-100 Enzyme-linked Immunosorbent Assay: 1:100-1:5000 Optimal working dilutions must be determined by end user.

Comment: The thermal stability is described by the loss rate. The loss rate was determined by accelerated thermal degradation test, that is, incubate the protein at 37°C for 48h, and no obvious degradation and precipitation were observed. The loss rate is less than 5% within the expiration date under appropriate storage condition.

Restrictions: For Research Use only

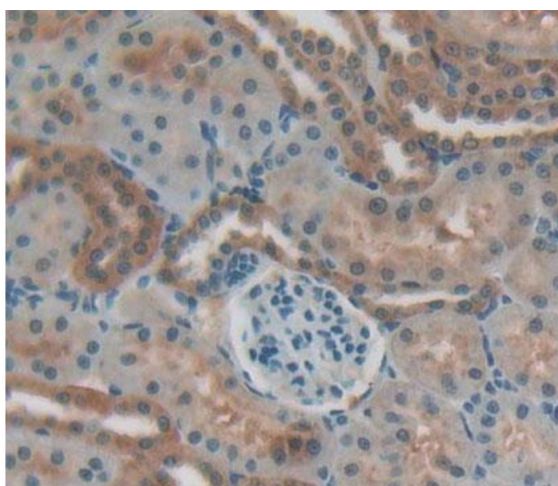
Handling

Format: Liquid

Concentration: Lot specific

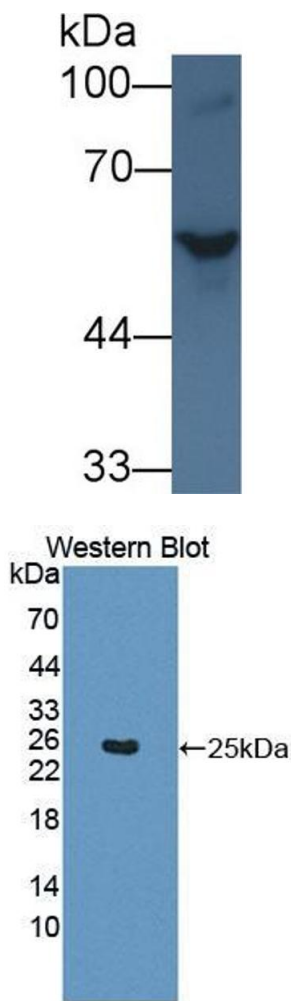
Buffer: PBS, pH 7.4, containing 0.02 % Sodium azide, 50 % glycerol.

Images



Immunohistochemistry

Image 1. Used in DAB staining on formalin fixed paraffin-embedded Kidney tissue



Western Blotting

Image 2. Western Blot; Sample: Rat Serum; Primary Ab: 1µg/ml Rabbit Anti-Rat SHH Antibody Second Ab: 0.2µg/mL HRP-Linked Caprine Anti-Rabbit IgG Polyclonal Antibody (Catalog: SAA544Rb19)

Western Blotting

Image 3. Figure. Western Blot; Sample: Recombinant protein.

Please check the [product details page](#) for more images. Overall 4 images are available for ABIN5013678.