



[Go to Product page](#)

Datasheet for ABIN5013679
anti-HLTF antibody (AA 831-990)

3 Images

Overview

Quantity:	100 µL
Target:	HLTF
Binding Specificity:	AA 831-990
Reactivity:	Mouse
Host:	Rabbit
Clonality:	Polyclonal
Conjugate:	This HLTF antibody is un-conjugated
Application:	Western Blotting (WB), Immunohistochemistry (IHC), Immunocytochemistry (ICC)

Product Details

Immunogen:	HLTF (Ala831-Lys990)
Isotype:	IgG
Specificity:	The antibody is a rabbit polyclonal antibody raised against HLTF. It has been selected for its ability to recognize HLTF in immunohistochemical staining and western blotting.
Purification:	Antigen-specific affinity chromatography

Target Details

Target:	HLTF
Alternative Name:	Helicase Like Transcription Factor (HLTF) (HLTF Products)
Background:	Alternative Names: HIP116A, HLTF1, RNF80, SMARCA3, SNF2L3, ZBU1, Sucrose

Target Details

nonfermenting protein 2-like 3, RING finger protein 80, DNA-binding protein/plasminogen activator inhibitor 1 regulator

Application Details

Application Notes:

- Western blotting: 1:50-400 Immunocytochemistry in formalin fixed cells: 1:50-500 Immunohistochemistry in formalin fixed frozen section: 1:50-500 Immunohistochemistry in paraffin section: 1:10-100 Enzyme-linked Immunosorbent Assay: 1:100-1:5000 Optimal working dilutions must be determined by end user.

Comment: The thermal stability is described by the loss rate. The loss rate was determined by accelerated thermal degradation test, that is, incubate the protein at 37°C for 48h, and no obvious degradation and precipitation were observed. The loss rate is less than 5% within the expiration date under appropriate storage condition.

Restrictions: For Research Use only

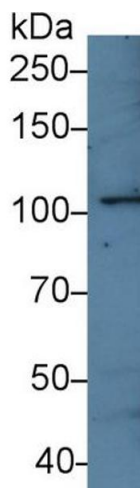
Handling

Format: Liquid

Concentration: Lot specific

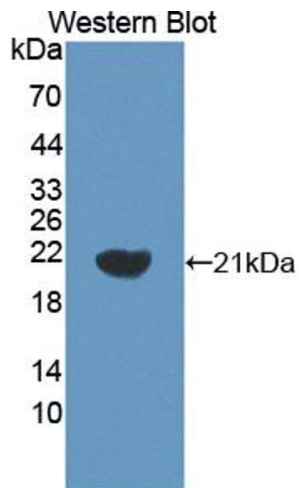
Buffer: PBS, pH 7.4, containing 0.02 % Sodium azide, 50 % glycerol.

Images



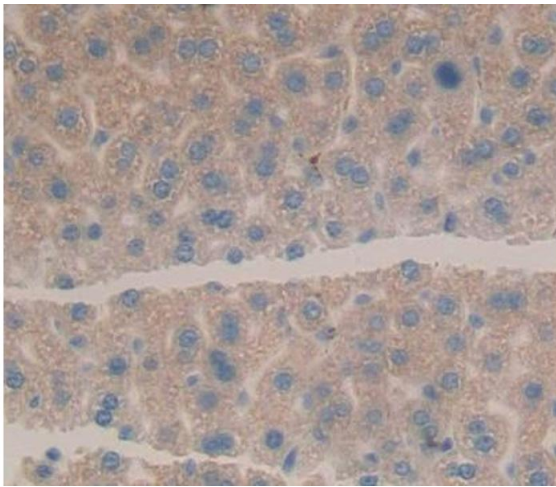
Western Blotting

Image 1. Western Blot; Sample: Human Jurkat cell lysate; Primary Ab: 3µg/ml Rabbit Anti-Mouse HLTF Antibody Second Ab: 0.2µg/mL HRP-Linked Caprine Anti-Rabbit IgG Polyclonal Antibody (Catalog: SAA544Rb19)



Western Blotting

Image 2. Figure. Western Blot; Sample: Recombinant protein.



Immunohistochemistry

Image 3. Used in DAB staining on formalin fixed paraffin-embedded Kidney tissue