

Datasheet for ABIN5013684

anti-Hemoglobin Subunit beta antibody (AA 1-147)[Go to Product page](#)**2** Images

Overview

Quantity:	100 µL
Target:	Hemoglobin Subunit beta (HBB)
Binding Specificity:	AA 1-147
Reactivity:	Horse
Host:	Rabbit
Clonality:	Polyclonal
Conjugate:	This Hemoglobin Subunit beta antibody is un-conjugated
Application:	Western Blotting (WB), Immunohistochemistry (IHC), Immunocytochemistry (ICC)

Product Details

Immunogen:	HBb (Met1-His147)
Isotype:	IgG
Specificity:	The antibody is a rabbit polyclonal antibody raised against HBb. It has been selected for its ability to recognize HBb in immunohistochemical staining and western blotting.
Purification:	Antigen-specific affinity chromatography

Target Details

Target:	Hemoglobin Subunit beta (HBB)
Abstract:	HBB Products
Target Type:	Viral Protein

Target Details

Background: Alternative Names: HB-B, HBD, CD113t-C, Beta Globin, Spinorphin

Application Details

Application Notes:

- Western blotting: 1:50-400 Immunocytochemistry in formalin fixed cells: 1:50-500 Immunohistochemistry in formalin fixed frozen section: 1:50-500 Immunohistochemistry in paraffin section: 1:10-100 Enzyme-linked Immunosorbent Assay: 1:100-1:5000 Optimal working dilutions must be determined by end user.

Comment: The thermal stability is described by the loss rate. The loss rate was determined by accelerated thermal degradation test, that is, incubate the protein at 37°C for 48h, and no obvious degradation and precipitation were observed. The loss rate is less than 5% within the expiration date under appropriate storage condition.

Restrictions: For Research Use only

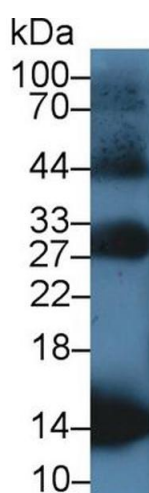
Handling

Format: Liquid

Concentration: Lot specific

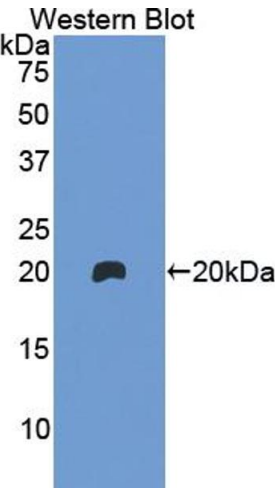
Buffer: PBS, pH 7.4, containing 0.02 % Sodium azide, 50 % glycerol.

Images



Western Blotting

Image 1. Western Blot; Sample: Rat Blood Cells lysate; Primary Ab: 1µg/ml Rabbit Anti-Equine HBb Antibody Second Ab: 0.2µg/mL HRP-Linked Caprine Anti-Rabbit IgG Polyclonal Antibody (Catalog: SAA544Rb19)



Western Blotting

Image 2. Figure. Western Blot; Sample: Recombinant protein.