

Datasheet for ABIN5013780
anti-IL1F10 antibody (AA 15-152)

2 Images

[Go to Product page](#)

Overview

Quantity:	100 µL
Target:	IL1F10
Binding Specificity:	AA 15-152
Reactivity:	Human
Host:	Rabbit
Clonality:	Polyclonal
Conjugate:	This IL1F10 antibody is un-conjugated
Application:	Western Blotting (WB), Immunohistochemistry (IHC), Immunocytochemistry (ICC)

Product Details

Immunogen:	IL1q (Ala15-Trp152)
Isotype:	IgG
Specificity:	The antibody is a rabbit polyclonal antibody raised against IL1q. It has been selected for its ability to recognize IL1q in immunohistochemical staining and western blotting.
Purification:	Antigen-specific affinity chromatography

Target Details

Target:	IL1F10
Alternative Name:	Interleukin 1 Theta (IL1q) (IL1F10 Products)
Background:	Alternative Names: IL1F10, IL38, FKSG75, IL-1HY2, IL-1F10, FIL1-Theta, Interleukin-38,

Target Details

Interleukin-1 Receptor Antagonist FKSG75, Interleukin 1 Family, Member 10

Application Details

Application Notes:

- Western blotting: 1:50-400 Immunocytochemistry in formalin fixed cells: 1:50-500 Immunohistochemistry in formalin fixed frozen section: 1:50-500 Immunohistochemistry in paraffin section: 1:10-100 Enzyme-linked Immunosorbent Assay: 1:100-1:5000 Optimal working dilutions must be determined by end user.

Comment:

The thermal stability is described by the loss rate. The loss rate was determined by accelerated thermal degradation test, that is, incubate the protein at 37°C for 48h, and no obvious degradation and precipitation were observed. The loss rate is less than 5% within the expiration date under appropriate storage condition.

Restrictions:

For Research Use only

Handling

Format:

Liquid

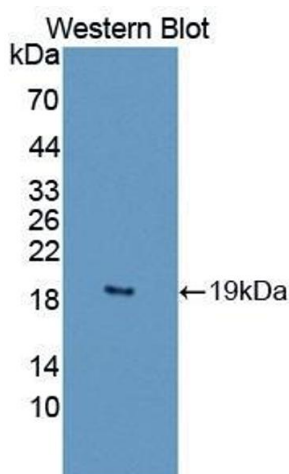
Concentration:

Lot specific

Buffer:

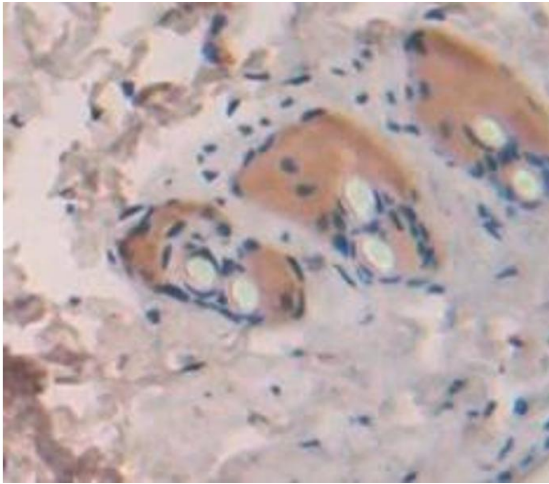
PBS, pH 7.4, containing 0.02 % Sodium azide, 50 % glycerol.

Images



Western Blotting

Image 1. Figure. Western Blot; Sample: Recombinant protein.



Immunohistochemistry

Image 2. Used in DAB staining on formalin fixed paraffin-embedded Kidney tissue