



[Go to Product page](#)

Datasheet for ABIN5013826  
**anti-KEL antibody (AA 128-332)**

2 Images

Overview

Quantity:	100 µL
Target:	KEL
Binding Specificity:	AA 128-332
Reactivity:	Human
Host:	Rabbit
Clonality:	Polyclonal
Conjugate:	This KEL antibody is un-conjugated
Application:	Western Blotting (WB), Immunohistochemistry (IHC), Immunocytochemistry (ICC)

Product Details

Immunogen:	KEL (Arg128-Ser332)
Isotype:	IgG
Specificity:	The antibody is a rabbit polyclonal antibody raised against KEL. It has been selected for its ability to recognize KEL in immunohistochemical staining and western blotting.
Purification:	Antigen-specific affinity chromatography

Target Details

Target:	KEL
Alternative Name:	Kell Protein (KEL) ( <a href="#">KEL Products</a> )
Background:	Alternative Names: CD238, ECE3, Kell Blood Group, Metalloendopeptidase, Metallo-

## Target Details

Endopeptidase, Kell blood group glycoprotein

## Application Details

### Application Notes:

- Western blotting: 1:50-400 Immunocytochemistry in formalin fixed cells: 1:50-500 Immunohistochemistry in formalin fixed frozen section: 1:50-500 Immunohistochemistry in paraffin section: 1:10-100 Enzyme-linked Immunosorbent Assay: 1:100-1:5000 Optimal working dilutions must be determined by end user.

### Comment:

The thermal stability is described by the loss rate. The loss rate was determined by accelerated thermal degradation test, that is, incubate the protein at 37°C for 48h, and no obvious degradation and precipitation were observed. The loss rate is less than 5% within the expiration date under appropriate storage condition.

### Restrictions:

For Research Use only

## Handling

### Format:

Liquid

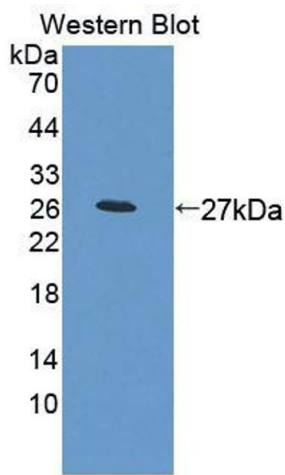
### Concentration:

Lot specific

### Buffer:

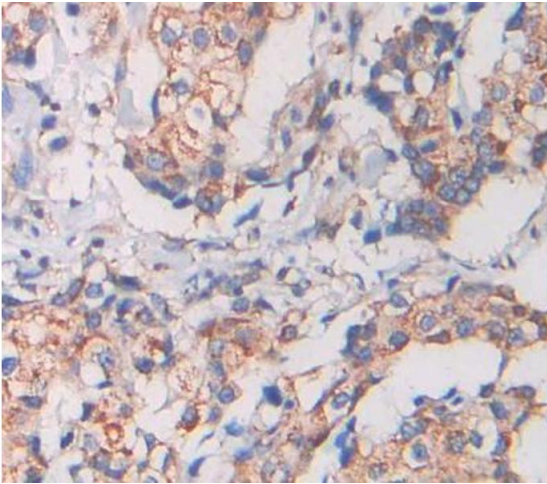
PBS, pH 7.4, containing 0.02 % Sodium azide, 50 % glycerol.

## Validation report #103013 for Western Blotting (WB)



### Western Blotting

**Image 1.** Figure. Western Blot; Sample: Recombinant protein.



### Immunohistochemistry

**Image 2.** Used in DAB staining on formalin fixed paraffin-embedded Kidney tissue