

Datasheet for ABIN5013865
anti-LETMD1 antibody (AA 162-347)[Go to Product page](#)

4 Images

Overview

Quantity:	100 µL
Target:	LETMD1
Binding Specificity:	AA 162-347
Reactivity:	Human
Host:	Rabbit
Clonality:	Polyclonal
Conjugate:	This LETMD1 antibody is un-conjugated
Application:	Immunohistochemistry (IHC), Western Blotting (WB), Immunocytochemistry (ICC)

Product Details

Immunogen:	LETMD1 (Pro162-Asn347)
Isotype:	IgG
Specificity:	The antibody is a rabbit polyclonal antibody raised against LETMD1. It has been selected for its ability to recognize LETMD1 in immunohistochemical staining and western blotting.
Purification:	Antigen-specific affinity chromatography

Target Details

Target:	LETMD1
Alternative Name:	LETM1 Domain Containing Protein 1 (LETMD1) (LETMD1 Products)
Background:	Alternative Names: HCCR1, HCRR-2, Cervical Cancer 1 Protooncogene, Cervical cancer proto-

Target Details

oncogene 2 protein

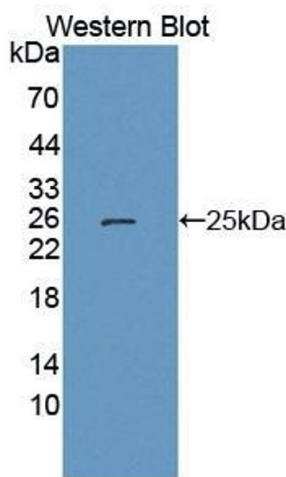
Application Details

Application Notes:	<ul style="list-style-type: none">Western blotting: 1:50-400 Immunocytochemistry in formalin fixed cells: 1:50-500 Immunohistochemistry in formalin fixed frozen section: 1:50-500 Immunohistochemistry in paraffin section: 1:10-100 Enzyme-linked Immunosorbent Assay: 1:100-1:5000 Optimal working dilutions must be determined by end user.
Comment:	The thermal stability is described by the loss rate. The loss rate was determined by accelerated thermal degradation test, that is, incubate the protein at 37°C for 48h, and no obvious degradation and precipitation were observed. The loss rate is less than 5% within the expiration date under appropriate storage condition.
Restrictions:	For Research Use only

Handling

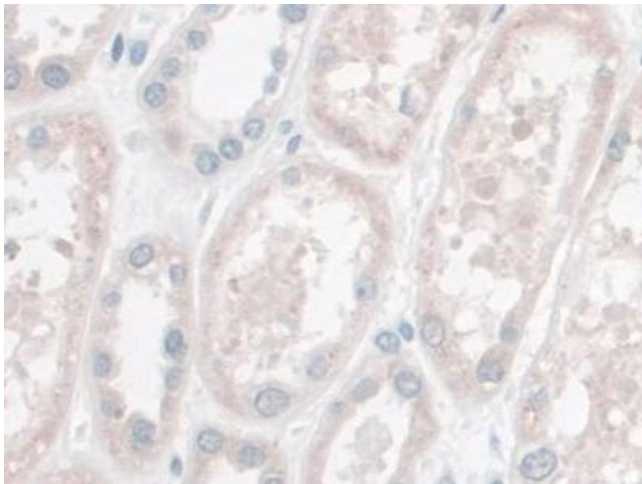
Format:	Liquid
Concentration:	Lot specific
Buffer:	PBS, pH 7.4, containing 0.02 % Sodium azide, 50 % glycerol.

Images



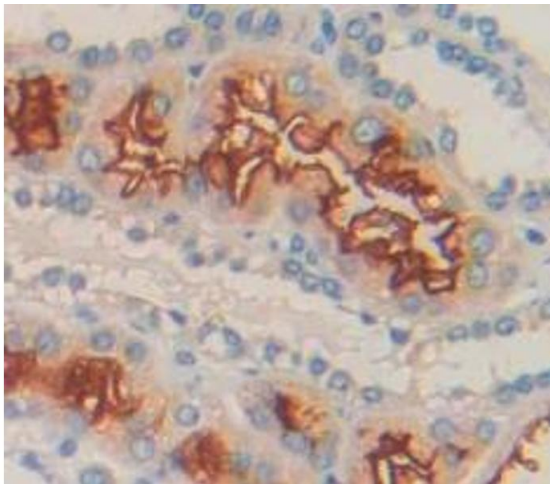
Western Blotting

Image 1. Figure. Western Blot; Sample: Recombinant protein.



Immunohistochemistry

Image 2. DAB staining on IHC-P; Samples: Human Kidney Tissue



Immunohistochemistry

Image 3. Used in DAB staining on formalin fixed paraffin-embedded Kidney tissue

Please check the [product details page](#) for more images. Overall 4 images are available for ABIN5013865.