



[Go to Product page](#)

Datasheet for ABIN5013879  
**anti-LAT2 antibody (AA 29-193)**

2 Images

### Overview

Quantity:	100 µL
Target:	LAT2
Binding Specificity:	AA 29-193
Reactivity:	Mouse
Host:	Rabbit
Clonality:	Polyclonal
Conjugate:	This LAT2 antibody is un-conjugated
Application:	Western Blotting (WB), Immunohistochemistry (IHC), Immunocytochemistry (ICC)

### Product Details

Immunogen:	LAT2 (Cys29-Val193)
Isotype:	IgG
Specificity:	The antibody is a rabbit polyclonal antibody raised against LAT2. It has been selected for its ability to recognize LAT2 in immunohistochemical staining and western blotting.
Purification:	Antigen-specific affinity chromatography

### Target Details

Target:	LAT2
Alternative Name:	Linker For Activation Of T-Cells Family, Member 2 (LAT2) ( <a href="#">LAT2 Products</a> )
Background:	Alternative Names: WBSCR15, WBSCR5, WSCR5, HSPC046, LAB, NTAL, Williams-Beuren

## Target Details

Syndrome Chromosome Region 5, Linker For Activation Of B Cells, Non-T Cell Activation Linker

Pathways: [Fc-epsilon Receptor Signaling Pathway](#), [BCR Signaling](#)

## Application Details

Application Notes: 

- Western blotting: 1:50-400 Immunocytochemistry in formalin fixed cells: 1:50-500 Immunohistochemistry in formalin fixed frozen section: 1:50-500 Immunohistochemistry in paraffin section: 1:10-100 Enzyme-linked Immunosorbent Assay: 1:100-1:5000 Optimal working dilutions must be determined by end user.

Comment: The thermal stability is described by the loss rate. The loss rate was determined by accelerated thermal degradation test, that is, incubate the protein at 37°C for 48h, and no obvious degradation and precipitation were observed. The loss rate is less than 5% within the expiration date under appropriate storage condition.

Restrictions: For Research Use only

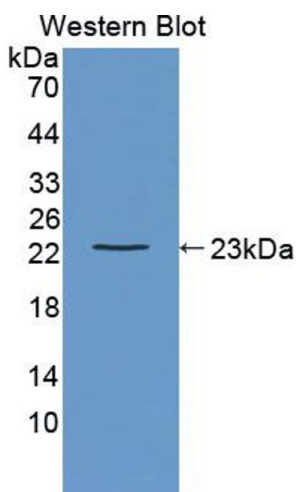
## Handling

Format: Liquid

Concentration: Lot specific

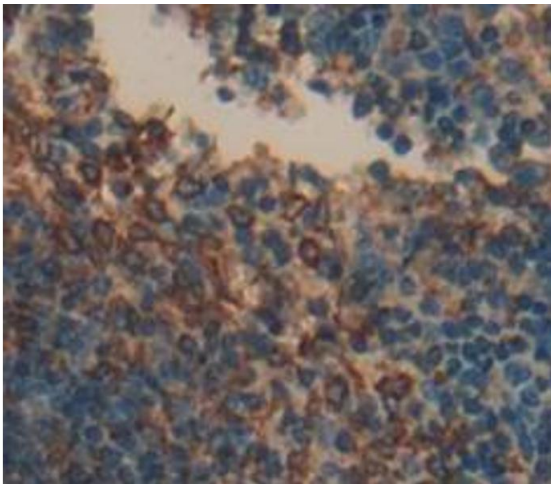
Buffer: PBS, pH 7.4, containing 0.02 % Sodium azide, 50 % glycerol.

## Validation report #103013 for Western Blotting (WB)



### Western Blotting

**Image 1.** Figure. Western Blot; Sample: Recombinant protein.



### Immunohistochemistry

**Image 2.** Used in DAB staining on formalin fixed paraffin-embedded Kidney tissue