

Datasheet for ABIN5013884
anti-LCNL1 antibody (AA 2-164)

4 Images

[Go to Product page](#)

Overview

Quantity:	100 µL
Target:	LCNL1
Binding Specificity:	AA 2-164
Reactivity:	Rat
Host:	Rabbit
Clonality:	Polyclonal
Conjugate:	This LCNL1 antibody is un-conjugated
Application:	Immunohistochemistry (IHC), Immunoprecipitation (IP), Western Blotting (WB), Immunocytochemistry (ICC)

Product Details

Purpose:	Polyclonal Antibody to Lipocalin Like Protein 1 (LCNL1)
Immunogen:	Recombinant Lipocalin Like Protein 1 (LCNL1) corresponding to N-terminal His Tag
Isotype:	IgG
Specificity:	The antibody is a rabbit polyclonal antibody raised against LCNL1. It has been selected for its ability to recognize LCNL1 in immunohistochemical staining and western blotting.
Cross-Reactivity:	Human
Purification:	Antigen-specific affinity chromatography followed by Protein A affinity chromatography

Target Details

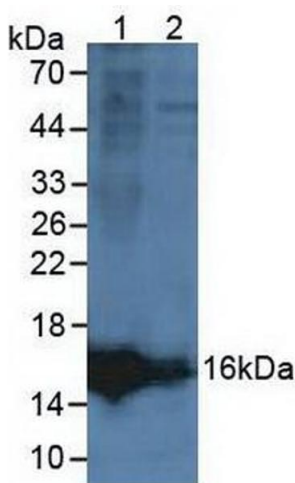
Target:	LCNL1
Alternative Name:	Lipocalin Like Protein 1 (LCNL1 Products)

Application Details

Application Notes:	Western blotting: 0.5-2 µg/mL Immunocytochemistry in formalin fixed cells: 5-20 µg/mL Immunohistochemistry in formalin fixed frozen section: 5-20 µg/mL Immunohistochemistry in paraffin section: 5-20 µg/mL Enzyme-linked Immunosorbent Assay: 0.05-2 µg/mL Optimal working dilutions must be determined by end user.
Comment:	The thermal stability is described by the loss rate. The loss rate was determined by accelerated thermal degradation test, that is, incubate the protein at 37°C for 48h, and no obvious degradation and precipitation were observed. The loss rate is less than 5% within the expiration date under appropriate storage condition.
Restrictions:	For Research Use only

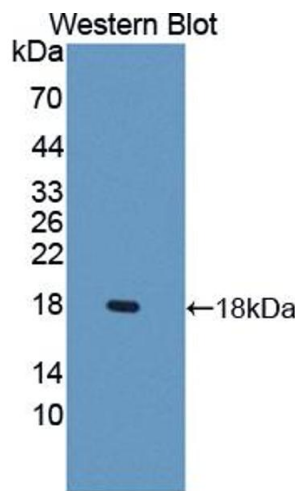
Handling

Format:	Liquid
Concentration:	Lot specific
Buffer:	0.01M PBS, pH 7.4, containing 0.05 % Proclin-300, 50 % glycerol.
Preservative:	ProClin
Storage:	4 °C, -20 °C
Storage Comment:	Store at 4°C for frequent use. Stored at -20°C in a manual defrost freezer for two year without detectable loss of activity. Avoid repeated freeze-thaw cycles.
Expiry Date:	24 months



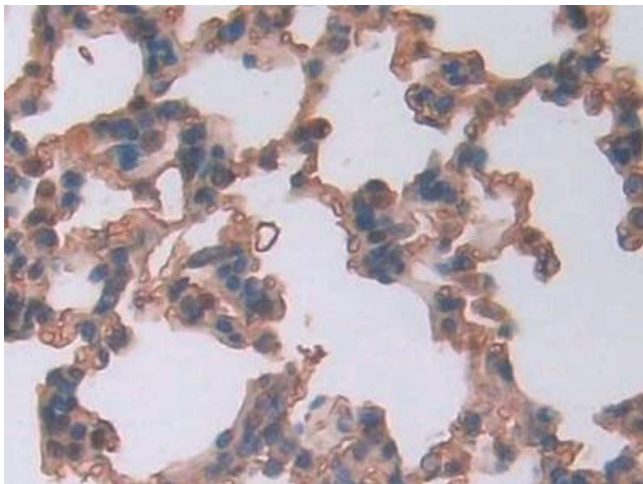
Western Blotting

Image 1. Figure. Western Blot; Sample: Lane1: Rat Ovary Tissue; Lane2: Human Hela Cells.



Western Blotting

Image 2. Figure. Western Blot; Sample: Recombinant LCNL1, Rat.



Immunohistochemistry

Image 3. DAB staining on IHC-P; Samples: Rat Lung Tissue

Please check the [product details page](#) for more images. Overall 4 images are available for ABIN5013884.