

Datasheet for ABIN5013903  
**anti-CCL9 antibody (AA 22-122)**[Go to Product page](#)

## 3 Images

## Overview

Quantity:	100 µL
Target:	CCL9 (Ccl9)
Binding Specificity:	AA 22-122
Reactivity:	Mouse
Host:	Rabbit
Clonality:	Polyclonal
Conjugate:	This CCL9 antibody is un-conjugated
Application:	Western Blotting (WB), Immunohistochemistry (IHC), Immunocytochemistry (ICC)

## Product Details

Immunogen:	MIP1g (Gln22-Gln122)
Isotype:	IgG
Specificity:	The antibody is a rabbit polyclonal antibody raised against MIP1g. It has been selected for its ability to recognize MIP1g in immunohistochemical staining and western blotting.
Purification:	Antigen-specific affinity chromatography

## Target Details

Target:	CCL9 (Ccl9)
Alternative Name:	Macrophage Inflammatory Protein 1 Gamma (MIP1g) ( <a href="#">Ccl9 Products</a> )
Background:	Alternative Names: CCL9, CCL10, SCYB9, CCF18, MRP2, C-C motif chemokine 9, Macrophage

## Target Details

inflammatory protein-related protein 2, Small-inducible cytokine A9

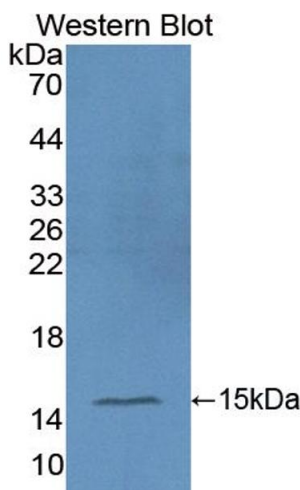
## Application Details

Application Notes:	<ul style="list-style-type: none"><li>Western blotting: 1:50-400 Immunocytochemistry in formalin fixed cells: 1:50-500 Immunohistochemistry in formalin fixed frozen section: 1:50-500 Immunohistochemistry in paraffin section: 1:10-100 Enzyme-linked Immunosorbent Assay: 1:100-1:5000 Optimal working dilutions must be determined by end user.</li></ul>
Comment:	The thermal stability is described by the loss rate. The loss rate was determined by accelerated thermal degradation test, that is, incubate the protein at 37&degC for 48h, and no obvious degradation and precipitation were observed. The loss rate is less than 5% within the expiration date under appropriate storage condition.
Restrictions:	For Research Use only

## Handling

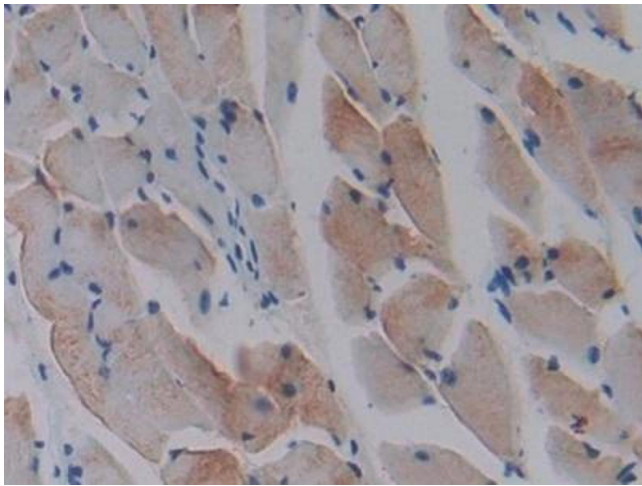
Format:	Liquid
Concentration:	Lot specific
Buffer:	0.01M PBS, pH7.4, containing 0.05% Proclin-300, 50% Glycerol

## Images



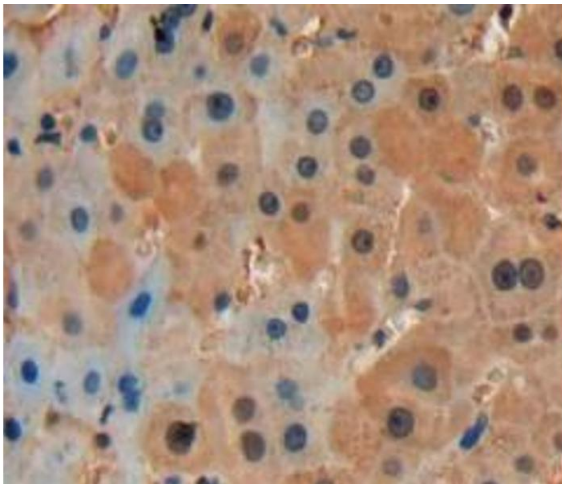
### Western Blotting

**Image 1.** Figure. Western Blot; Sample: Recombinant protein.



#### Immunohistochemistry

**Image 2.** DAB staining on IHC-P; Samples: Mouse Skeletal muscle Tissue



#### Immunohistochemistry

**Image 3.** Used in DAB staining on formalin fixed paraffin-embedded liver tissue