



[Go to Product page](#)

Datasheet for ABIN5013926

## anti-MTA1 antibody (AA 6-218)

### 3 Images

#### Overview

Quantity:	100 µL
Target:	MTA1
Binding Specificity:	AA 6-218
Reactivity:	Mouse
Host:	Rabbit
Clonality:	Polyclonal
Conjugate:	This MTA1 antibody is un-conjugated
Application:	Western Blotting (WB), Immunohistochemistry (IHC), Immunocytochemistry (ICC)

#### Product Details

Immunogen:	MTA1 (Tyr6-Arg218)
Isotype:	IgG
Specificity:	The antibody is a rabbit polyclonal antibody raised against MTA1. It has been selected for its ability to recognize MTA1 in immunohistochemical staining and western blotting.
Purification:	Antigen-specific affinity chromatography

#### Target Details

Target:	MTA1
Alternative Name:	Metastasis Associated Protein 1 (MTA1) ( <a href="#">MTA1 Products</a> )
Pathways:	<a href="#">Chromatin Binding</a>

## Application Details

Application Notes: • Western blotting: 1:50-400 Immunocytochemistry in formalin fixed cells: 1:50-500 Immunohistochemistry in formalin fixed frozen section: 1:50-500 Immunohistochemistry in paraffin section: 1:10-100 Enzyme-linked Immunosorbent Assay: 1:100-1:5000 Optimal working dilutions must be determined by end user.

Comment: The thermal stability is described by the loss rate. The loss rate was determined by accelerated thermal degradation test, that is, incubate the protein at 37°C for 48h, and no obvious degradation and precipitation were observed. The loss rate is less than 5% within the expiration date under appropriate storage condition.

Restrictions: For Research Use only

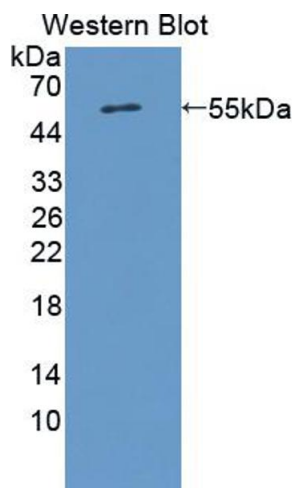
## Handling

Format: Liquid

Concentration: Lot specific

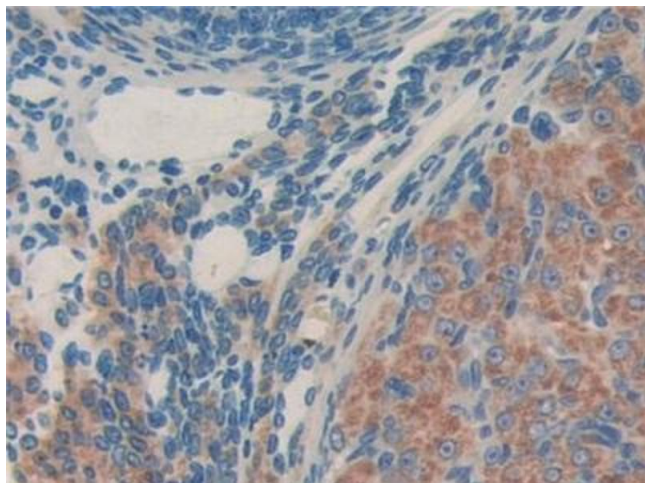
Buffer: PBS, pH 7.4, containing 0.02 % Sodium azide, 50 % glycerol.

## Validation report #103013 for Western Blotting (WB)



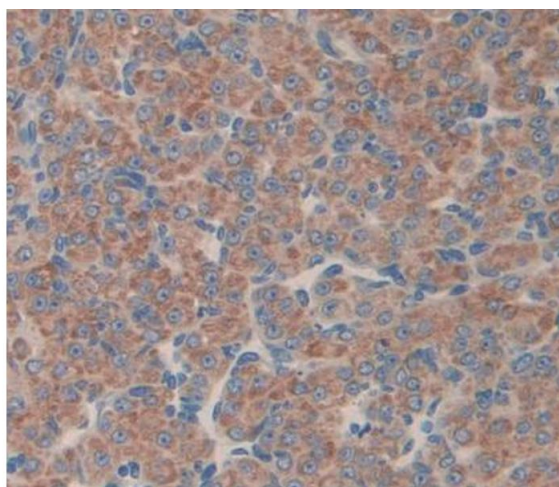
### Western Blotting

**Image 1.** Figure. Western Blot; Sample: Recombinant protein.



#### Immunohistochemistry

**Image 2.** DAB staining on IHC-P; Samples: Mouse Ovary Tissue



#### Immunohistochemistry

**Image 3.** Used in DAB staining on formalin fixed paraffin-embedded Kidney tissue