

Datasheet for ABIN5013937
anti-METTL21C antibody (AA 1-248)[Go to Product page](#)

3 Images

Overview

Quantity:	100 µL
Target:	METTL21C
Binding Specificity:	AA 1-248
Reactivity:	Rat
Host:	Rabbit
Clonality:	Polyclonal
Conjugate:	This METTL21C antibody is un-conjugated
Application:	Western Blotting (WB), Immunohistochemistry (IHC), Immunocytochemistry (ICC)

Product Details

Immunogen:	METTL21C (Met1-Asp248)
Isotype:	IgG
Specificity:	The antibody is a rabbit polyclonal antibody raised against METTL21C. It has been selected for its ability to recognize METTL21C in immunohistochemical staining and western blotting.
Purification:	Antigen-specific affinity chromatography

Target Details

Target:	METTL21C
Alternative Name:	Methyltransferase Like Protein 21C (METTL21C) (METTL21C Products)
Background:	Alternative Names: C13orf39, Protein-lysine methyltransferase METTL21C

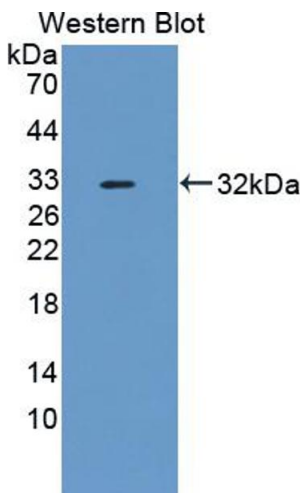
Application Details

Application Notes:	<ul style="list-style-type: none">Western blotting: 1:50-400 Immunocytochemistry in formalin fixed cells: 1:50-500 Immunohistochemistry in formalin fixed frozen section: 1:50-500 Immunohistochemistry in paraffin section: 1:10-100 Enzyme-linked Immunosorbent Assay: 1:100-1:5000 Optimal working dilutions must be determined by end user.
Comment:	The thermal stability is described by the loss rate. The loss rate was determined by accelerated thermal degradation test, that is, incubate the protein at 37°C for 48h, and no obvious degradation and precipitation were observed. The loss rate is less than 5% within the expiration date under appropriate storage condition.
Restrictions:	For Research Use only

Handling

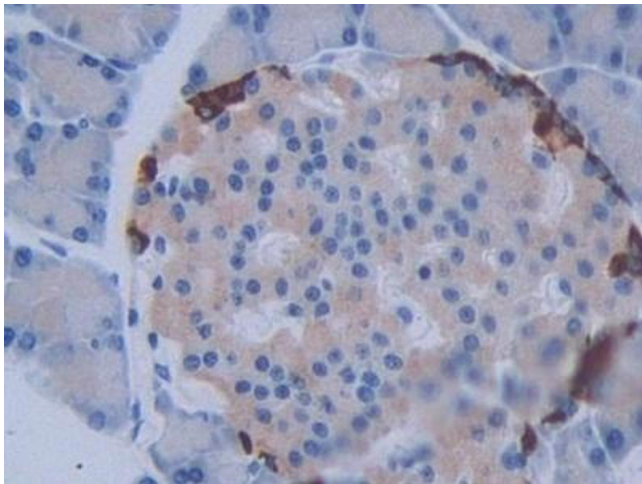
Format:	Liquid
Concentration:	Lot specific
Buffer:	PBS, pH 7.4, containing 0.02 % Sodium azide, 50 % glycerol.

Validation report #103013 for Western Blotting (WB)



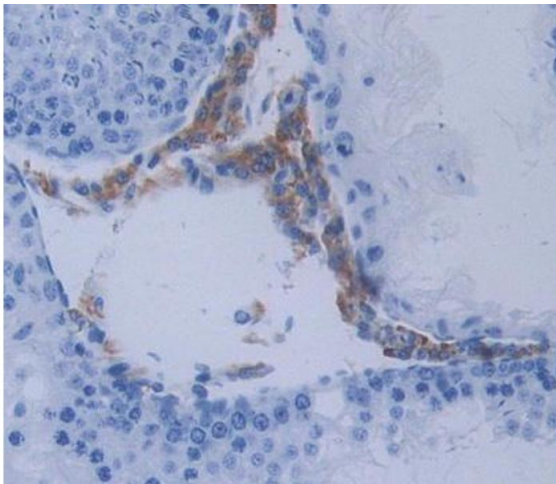
Western Blotting

Image 1. Figure. Western Blot; Sample: Recombinant protein.



Immunohistochemistry

Image 2. DAB staining on IHC-P; Samples: Rat Pancreas Tissue



Immunohistochemistry

Image 3. Used in DAB staining on formalin fixed paraffin-embedded Kidney tissue