

Datasheet for ABIN5013947
anti-MTIF2 antibody (AA 1-201)

3 Images

[Go to Product page](#)

Overview

Quantity:	100 µL
Target:	MTIF2
Binding Specificity:	AA 1-201
Reactivity:	Rat
Host:	Rabbit
Clonality:	Polyclonal
Conjugate:	This MTIF2 antibody is un-conjugated
Application:	Western Blotting (WB), Immunohistochemistry (IHC), Immunocytochemistry (ICC)

Product Details

Immunogen:	MTIF2 (Met1-Arg201)
Isotype:	IgG
Specificity:	The antibody is a rabbit polyclonal antibody raised against MTIF2. It has been selected for its ability to recognize MTIF2 in immunohistochemical staining and western blotting.
Purification:	Antigen-specific affinity chromatography

Target Details

Target:	MTIF2
Abstract:	MTIF2 Products
Pathways:	Ribonucleoprotein Complex Subunit Organization

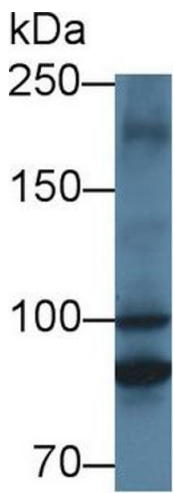
Application Details

Application Notes:	<ul style="list-style-type: none">Western blotting: 1:50-400 Immunocytochemistry in formalin fixed cells: 1:50-500 Immunohistochemistry in formalin fixed frozen section: 1:50-500 Immunohistochemistry in paraffin section: 1:10-100 Enzyme-linked Immunosorbent Assay: 1:100-1:5000 Optimal working dilutions must be determined by end user.
Comment:	The thermal stability is described by the loss rate. The loss rate was determined by accelerated thermal degradation test, that is, incubate the protein at 37°C for 48h, and no obvious degradation and precipitation were observed. The loss rate is less than 5% within the expiration date under appropriate storage condition.
Restrictions:	For Research Use only

Handling

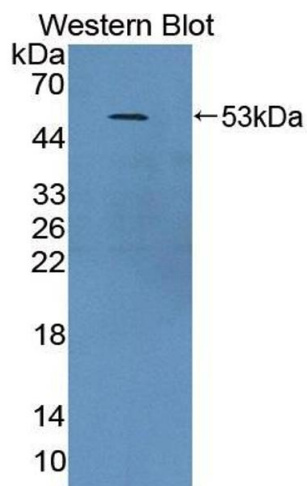
Format:	Liquid
Concentration:	Lot specific
Buffer:	PBS, pH 7.4, containing 0.02 % Sodium azide, 50 % glycerol.

Images



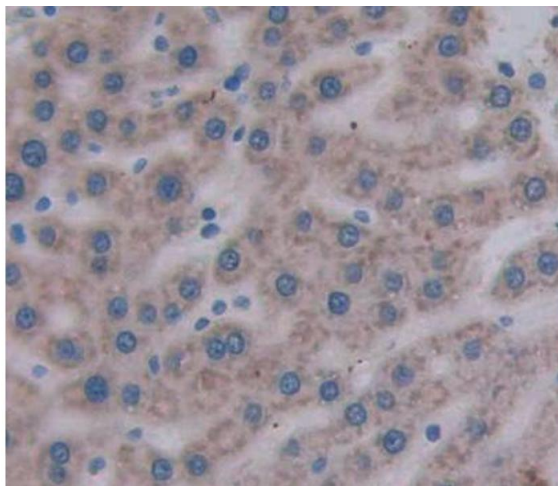
Western Blotting

Image 1. Western Blot; Sample: Rat Heart lysate; Primary Ab: 1µg/ml Rabbit Anti-Rat MTIF2 Antibody Second Ab: 0.2µg/mL HRP-Linked Caprine Anti-Rabbit IgG Polyclonal Antibody (Catalog: SAA544Rb19)



Western Blotting

Image 2. Figure. Western Blot; Sample: Recombinant protein.



Immunohistochemistry

Image 3. Used in DAB staining on formalin fixed paraffin-embedded liver tissue