



[Go to Product page](#)

Datasheet for ABIN5013949

anti-MTUS1 antibody (AA 1020-1210)

3 Images

Overview

Quantity:	100 µL
Target:	MTUS1
Binding Specificity:	AA 1020-1210
Reactivity:	Mouse
Host:	Rabbit
Clonality:	Polyclonal
Conjugate:	This MTUS1 antibody is un-conjugated
Application:	Western Blotting (WB), Immunohistochemistry (IHC), Immunocytochemistry (ICC)

Product Details

Immunogen:	MTUS1 (Glu1020-Arg1210)
Isotype:	IgG
Specificity:	The antibody is a rabbit polyclonal antibody raised against MTUS1. It has been selected for its ability to recognize MTUS1 in immunohistochemical staining and western blotting.
Purification:	Antigen-specific affinity chromatography

Target Details

Target:	MTUS1
Alternative Name:	Mitochondrial Tumor Suppressor 1 (MTUS1) (MTUS1 Products)
Background:	Alternative Names: ATIP, MP44, MTSG1, ATIP1, ATBP, Microtubule Associated Tumor

Target Details

Suppressor 1, AT2 Receptor-Interacting Protein, Angiotensin-II type 2 receptor-interacting protein

Application Details

Application Notes:

- Western blotting: 1:50-400 Immunocytochemistry in formalin fixed cells: 1:50-500 Immunohistochemistry in formalin fixed frozen section: 1:50-500 Immunohistochemistry in paraffin section: 1:10-100 Enzyme-linked Immunosorbent Assay: 1:100-1:5000 Optimal working dilutions must be determined by end user.

Comment: The thermal stability is described by the loss rate. The loss rate was determined by accelerated thermal degradation test, that is, incubate the protein at 37°C for 48h, and no obvious degradation and precipitation were observed. The loss rate is less than 5% within the expiration date under appropriate storage condition.

Restrictions: For Research Use only

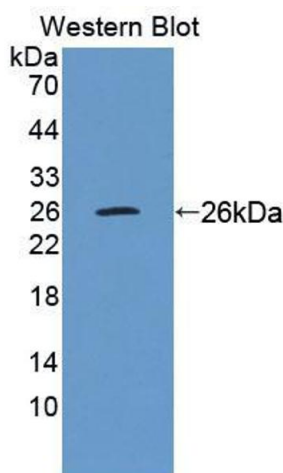
Handling

Format: Liquid

Concentration: Lot specific

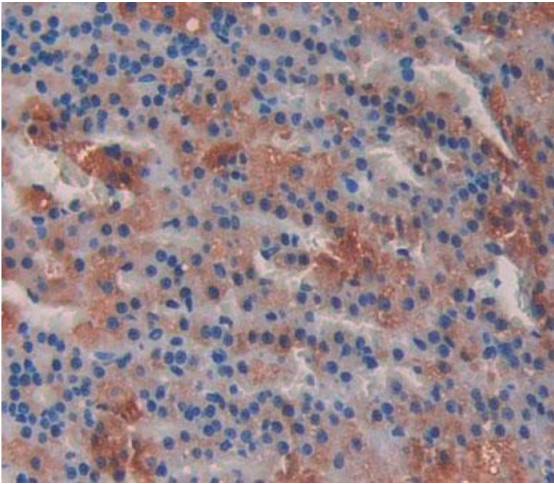
Buffer: PBS, pH 7.4, containing 0.02 % Sodium azide, 50 % glycerol.

Images



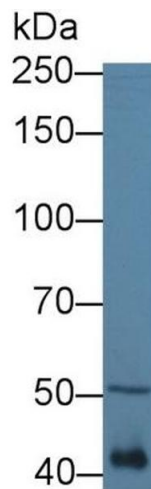
Western Blotting

Image 1. Figure. Western Blot; Sample: Recombinant protein.



Immunohistochemistry

Image 2. Used in DAB staining on formalin fixed paraffin-embedded Kidney tissue



Western Blotting

Image 3. Western Blot; Sample: Mouse Serum; Primary Ab: 1µg/ml Rabbit Anti-Mouse MTUS1 Antibody Second Ab: 0.2µg/mL HRP-Linked Caprine Anti-Rabbit IgG Polyclonal Antibody (Catalog: SAA544Rb19)