

Datasheet for ABIN5013967
anti-MEF2A antibody (AA 1-162)

3 Images

[Go to Product page](#)

Overview

Quantity:	100 µL
Target:	MEF2A
Binding Specificity:	AA 1-162
Reactivity:	Human
Host:	Rabbit
Clonality:	Polyclonal
Conjugate:	This MEF2A antibody is un-conjugated
Application:	Western Blotting (WB), Immunohistochemistry (IHC), Immunocytochemistry (ICC)

Product Details

Immunogen:	MEF2A (Met1-Ser162)
Isotype:	IgG
Specificity:	The antibody is a rabbit polyclonal antibody raised against MEF2A. It has been selected for its ability to recognize MEF2A in immunohistochemical staining and western blotting.
Purification:	Antigen-specific affinity chromatography

Target Details

Target:	MEF2A
Alternative Name:	Myocyte Specific Enhancer Factor 2A (MEF2A) (MEF2A Products)
Background:	Alternative Names: MEF2-A, ADCAD1, RSRFC4, RSRFC9, MADS Box Transcription Enhancer

Target Details

Factor 2, Polypeptide A, Serum response factor-like protein 1

Pathways: [Neurotrophin Signaling Pathway](#), [Activation of Innate immune Response](#), [Carbohydrate Homeostasis](#), [Chromatin Binding](#), [Regulation of Muscle Cell Differentiation](#), [Toll-Like Receptors Cascades](#)

Application Details

Application Notes:

- Western blotting: 1:50-400 Immunocytochemistry in formalin fixed cells: 1:50-500 Immunohistochemistry in formalin fixed frozen section: 1:50-500 Immunohistochemistry in paraffin section: 1:10-100 Enzyme-linked Immunosorbent Assay: 1:100-1:5000 Optimal working dilutions must be determined by end user.

Comment: The thermal stability is described by the loss rate. The loss rate was determined by accelerated thermal degradation test, that is, incubate the protein at 37°C for 48h, and no obvious degradation and precipitation were observed. The loss rate is less than 5% within the expiration date under appropriate storage condition.

Restrictions: For Research Use only

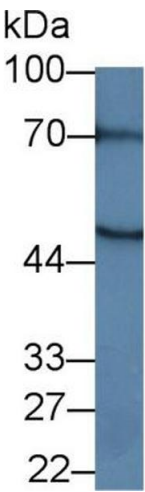
Handling

Format: Liquid

Concentration: Lot specific

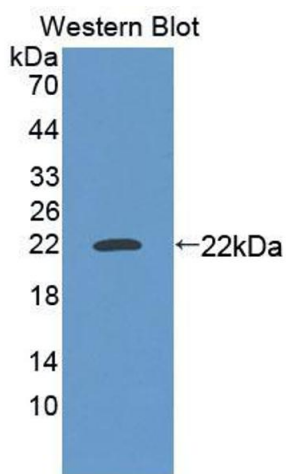
Buffer: PBS, pH 7.4, containing 0.02 % Sodium azide, 50 % glycerol.

Images



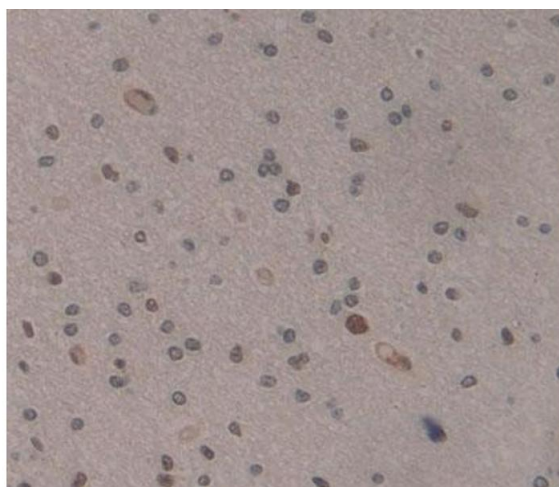
Western Blotting

Image 1. Western Blot; Sample: Mouse Pancreas lysate; Primary Ab: 1 µg/ml Rabbit Anti-Human MEF2A Antibody Second Ab: 0.2 µg/mL HRP-Linked Caprine Anti-Rabbit IgG Polyclonal Antibody (Catalog: SAA544Rb19)



Western Blotting

Image 2. Figure. Western Blot; Sample: Recombinant protein.



Immunohistochemistry

Image 3. Used in DAB staining on formalin fixed paraffin-embedded Kidney tissue