

Datasheet for ABIN5013998
anti-Inversin antibody (AA 1-237)



[Go to Product page](#)

4 Images

Overview

Quantity:	100 µL
Target:	Inversin (INVS)
Binding Specificity:	AA 1-237
Reactivity:	Human
Host:	Rabbit
Clonality:	Polyclonal
Conjugate:	This Inversin antibody is un-conjugated
Application:	Western Blotting (WB), Immunohistochemistry (IHC)

Product Details

Purpose:	Polyclonal Antibody to Nephronophthisis 2, Infantile (NPHP2)
Immunogen:	RPC545Hu01Recombinant Nephronophthisis 2, Infantile (NPHP2)
Isotype:	IgG
Specificity:	The antibody is a rabbit polyclonal antibody raised against NPHP2. It has been selected for its ability to recognize NPHP2 in immunohistochemical staining and western blotting.
Cross-Reactivity:	Rat
Purification:	Antigen-specific affinity chromatography followed by Protein A affinity chromatography

Target Details

Target:	Inversin (INVS)
---------	-----------------

Target Details

Alternative Name:	NPHP2 (INVS Products)
Background:	INVS, NPH2, INV, Inversin, Nephrocystin 2, Inversion of embryo turning homolog

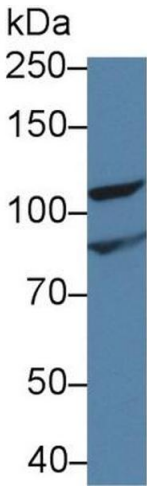
Application Details

Application Notes:	Western blotting: 0.01-2 µg/mL,Immunohistochemistry: 5-20 µg/mL,Optimal working dilutions must be determined by end user.
Comment:	The thermal stability is described by the loss rate. The loss rate was determined by accelerated thermal degradation test, that is, incubate the protein at 37°C for 48h, and no obvious degradation and precipitation were observed. The loss rate is less than 5% within the expiration date under appropriate storage condition.
Restrictions:	For Research Use only

Handling

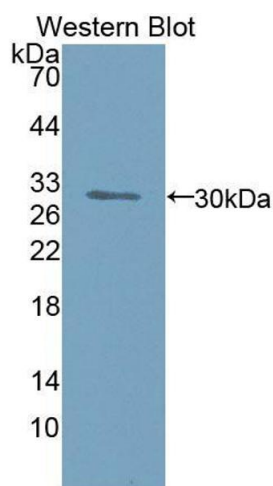
Format:	Liquid
Concentration:	0.5 mg/mL
Buffer:	0.01M PBS, pH 7.4, containing 0.05 % Proclin-300, 50 % glycerol.
Preservative:	ProClin
Storage:	4 °C,-20 °C
Storage Comment:	Store at 4°C for frequent use. Stored at -20°C in a manual defrost freezer for two year without detectable loss of activity. Avoid repeated freeze-thaw cycles.

Images



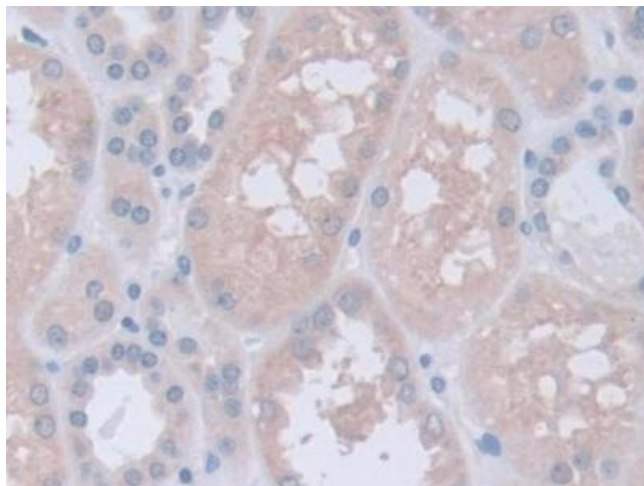
Western Blotting

Image 1. Western Blot; Sample: Rat Kidney lysate; Primary Ab: 1µg/ml Rabbit Anti-Human NPHP2 Antibody Second Ab: 0.2µg/mL HRP-Linked Caprine Anti-Rabbit IgG Polyclonal Antibody (Catalog: SAA544Rb19)



Western Blotting

Image 2. Figure. Western Blot; Sample: Recombinant protein.



Immunohistochemistry

Image 3. DAB staining on IHC-P; Samples: Human Kidney Tissue

Please check the [product details page](#) for more images. Overall 4 images are available for ABIN5013998.