

Datasheet for ABIN5014021  
**anti-NCK1 antibody (AA 2-377)**[Go to Product page](#)

## 3 Images

## Overview

Quantity:	100 µL
Target:	NCK1
Binding Specificity:	AA 2-377
Reactivity:	Human
Host:	Rabbit
Clonality:	Polyclonal
Conjugate:	This NCK1 antibody is un-conjugated
Application:	Western Blotting (WB), Immunohistochemistry (IHC), Immunocytochemistry (ICC)

## Product Details

Immunogen:	NCK1 (Ala2-Ser377)
Isotype:	IgG
Specificity:	The antibody is a rabbit polyclonal antibody raised against NCK1. It has been selected for its ability to recognize NCK1 in immunohistochemical staining and western blotting.
Purification:	Antigen-specific affinity chromatography

## Target Details

Target:	NCK1
Alternative Name:	Non Catalytic Region Of Tyrosine Kinase Adaptor Protein 1 (NCK1) ( <a href="#">NCK1 Products</a> )
Background:	Alternative Names: NCKalpha, NCKa, NCK adaptor protein 1, Cytoplasmic protein NCK1,

## Target Details

SH2/SH3 adaptor protein NCK-alpha

Pathways: [TCR Signaling](#), [Regulation of Actin Filament Polymerization](#), [Signaling Events mediated by VEGFR1 and VEGFR2](#), [VEGFR1 Specific Signals](#)

## Application Details

Application Notes: 

- Western blotting: 1:50-400 Immunocytochemistry in formalin fixed cells: 1:50-500 Immunohistochemistry in formalin fixed frozen section: 1:50-500 Immunohistochemistry in paraffin section: 1:10-100 Enzyme-linked Immunosorbent Assay: 1:100-1:5000 Optimal working dilutions must be determined by end user.

Comment: The thermal stability is described by the loss rate. The loss rate was determined by accelerated thermal degradation test, that is, incubate the protein at 37°C for 48h, and no obvious degradation and precipitation were observed. The loss rate is less than 5% within the expiration date under appropriate storage condition.

Restrictions: For Research Use only

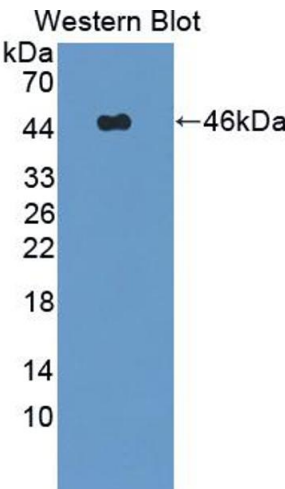
## Handling

Format: Liquid

Concentration: Lot specific

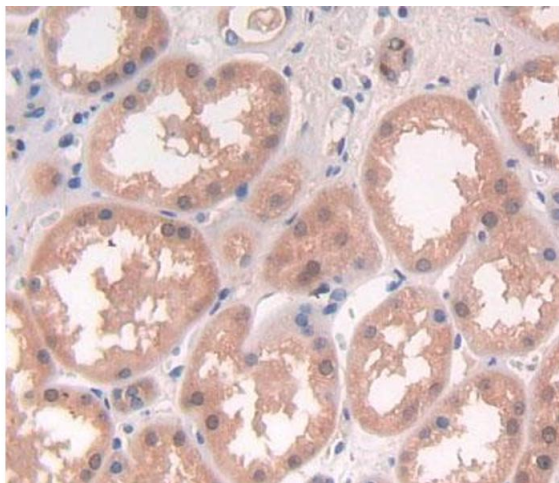
Buffer: PBS, pH 7.4, containing 0.02 % Sodium azide, 50 % glycerol.

## Images



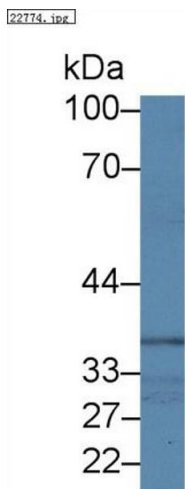
### Western Blotting

**Image 1.** Figure. Western Blot; Sample: Recombinant protein.



Immunohistochemistry

**Image 2.** Used in DAB staining on fromalin fixed paraffin-embedded Kidney tissue



Western Blotting

**Image 3.** Western Blot; Sample: Human Lung lysate; Primary Ab: 1µg/ml Rabbit Anti-Human NCK1 Antibody Second Ab: 0.2µg/mL HRP-Linked Caprine Anti-Rabbit IgG Polyclonal Antibody (Catalog: SAA544Rb19)