



[Go to Product page](#)

Datasheet for ABIN5014025  
**anti-NUAK1 antibody (AA 404-651)**

3 Images

### Overview

Quantity:	100 µL
Target:	NUAK1
Binding Specificity:	AA 404-651
Reactivity:	Mouse
Host:	Rabbit
Clonality:	Polyclonal
Conjugate:	This NUAK1 antibody is un-conjugated
Application:	Western Blotting (WB), Immunohistochemistry (IHC), Immunocytochemistry (ICC)

### Product Details

Immunogen:	NUAK1 (Lys404-Leu651)
Isotype:	IgG
Specificity:	The antibody is a rabbit polyclonal antibody raised against NUAK1. It has been selected for its ability to recognize NUAK1 in immunohistochemical staining and western blotting.
Purification:	Antigen-specific affinity chromatography

### Target Details

Target:	NUAK1
Alternative Name:	NUAK Family SNF1 Like Kinase 1 (NUAK1) ( <a href="#">NUAK1 Products</a> )
Background:	Alternative Names: ARK5, OMPHK1, NuaK1, AMP-Activated Protein Kinase Family Member 5,

## Target Details

Omphalocele kinase 1

## Application Details

### Application Notes:

- Western blotting: 1:50-400 Immunocytochemistry in formalin fixed cells: 1:50-500 Immunohistochemistry in formalin fixed frozen section: 1:50-500 Immunohistochemistry in paraffin section: 1:10-100 Enzyme-linked Immunosorbent Assay: 1:100-1:5000 Optimal working dilutions must be determined by end user.

### Comment:

The thermal stability is described by the loss rate. The loss rate was determined by accelerated thermal degradation test, that is, incubate the protein at 37°C for 48h, and no obvious degradation and precipitation were observed. The loss rate is less than 5% within the expiration date under appropriate storage condition.

### Restrictions:

For Research Use only

## Handling

### Format:

Liquid

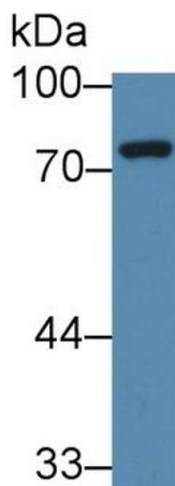
### Concentration:

Lot specific

### Buffer:

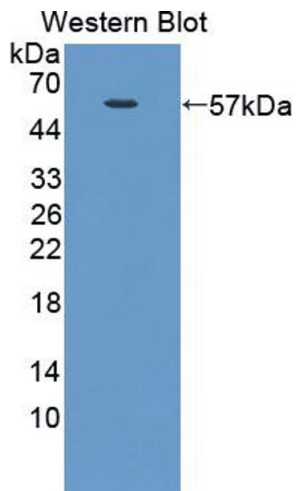
PBS, pH 7.4, containing 0.02 % Sodium azide, 50 % glycerol.

## Images



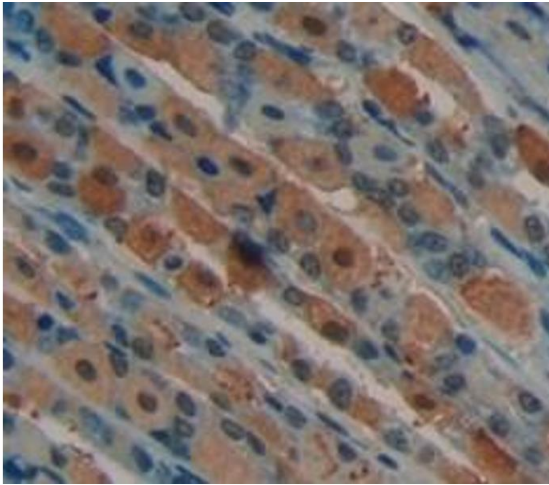
### Western Blotting

**Image 1.** Western Blot; Sample: Mouse Cerebrum lysate; Primary Ab: 1µg/ml Rabbit Anti-Mouse NUAK1 Antibody Second Ab: 0.2µg/mL HRP-Linked Caprine Anti-Rabbit IgG Polyclonal Antibody (Catalog: SAA544Rb19)



### Western Blotting

**Image 2.** Figure. Western Blot; Sample: Recombinant protein.



### Immunohistochemistry

**Image 3.** Used in DAB staining on formalin fixed paraffin-embedded Kidney tissue